

**UNDERGRADUATE**



**2025**

**PROSPECTUS**

# ONE MONASH

## AT MONASH, WE SEE CHALLENGES AS OPPORTUNITIES.

Whether it's through education, research, innovation, or changing the cultural landscape, we're committed to making a positive impact on the world so that future generations can thrive.

Our academics, students, staff, alumni, and donors make up a community of change-makers. Whether you want to change your life, your career, your community, or the future, it starts at Monash.

Are you ready to create change with Monash?



**CLICK HERE** to learn more



## CONNECT WITH US

Register to receive information about study options, Monash life and upcoming events.

 [monash.edu.my/study/register](https://monash.edu.my/study/register)

**UNIVERSITY-WIDE  
TOP 100 RANKINGS**

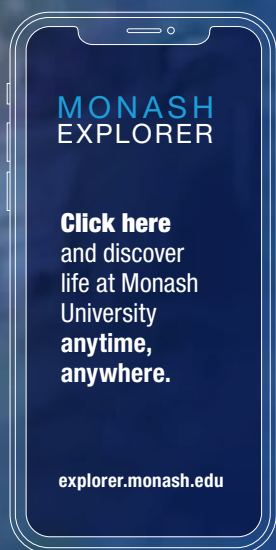
**#42** IN  
THE  
WORLD

Most International Universities In The World (THE) 2024



## A GLOBAL COMMUNITY

As a university with a global footprint, we know we have to play our part in solving the problems facing the world. Our main base is in Australia, but our presence extends to locations in China, Malaysia, Indonesia, Italy and India. We also have partnerships with many international teaching institutions. Through our shared values, experiences and goals, we are more connected now than ever. This means access to more research collaborations, more global partnerships, and a greater choice of overseas opportunities.



### 3 INTERNATIONAL TEACHING LOCATIONS

ITALY  
Prato

INDIA  
Mumbai

CHINA  
Suzhou

### 6 CAMPUSES

MALAYSIA  
Kuala Lumpur

INDONESIA  
Jakarta

AUSTRALIA  
MELBOURNE  
Clayton  
Caulfield  
Parkville  
Peninsula

### 100+ PARTNER UNIVERSITIES AROUND THE GLOBE

# #22

IN THE WORLD

Reuters Top 75: Asia Pacific's Most Innovative Universities 2019

# #35

IN THE WORLD

US News and World Report Best Global Universities Rankings 2024

# #37

IN THE WORLD

QS World University Rankings 2025

# #54

IN THE WORLD

QS Graduate Employability Rankings 2022

# #58

IN THE WORLD

Times Higher Education (THE) World University Rankings 2025

# #82

IN THE WORLD

Academic Ranking of World Universities 2024



## 1 DISCOVER MONASH

### Welcome to Monash University Malaysia

We are a vibrant and diverse community of over 9700 students from 77 countries, studying across seven schools. Everything you need is on campus – stimulating learning spaces, food outlets, sporting facilities, and more.

[Turn to page 4](#)

### Come to our Open Days

Nothing can replace experiencing the University environment for yourself. You get a feel for the atmosphere, the facilities and what the people are like, which can help with your decision.

[monash.edu.my/study/register](https://monash.edu.my/study/register)

### Meet us in person

Stop by our campus and speak to our experienced counsellors for personalised guidance. Be sure to make an appointment before you do, so we can meet you immediately.

[appointment.monash.edu.my](https://appointment.monash.edu.my)

### Visit our website

Our website is full of information. It can be a bit overwhelming but if you start at [monash.edu.my/study](https://monash.edu.my/study), you'll be able to find all you need.

### Follow us on social media

You can read all about us, but the best way is to see for yourself. Find us on social media for a glimpse into student life at Monash and the exciting experiences you'll have studying with us.

**MonashMalaysia**

### Take a virtual tour

If you're unable to visit us in person, you can still tour our campus online. Immerse yourself in Monash spaces, move around, and explore.

[virtualltour.monash.edu.my](https://virtualltour.monash.edu.my)

### Chat with us online

Got a quick question? We are online on weekdays from 9am to 5pm, Malaysia time.

[ask.monash.edu.my](https://ask.monash.edu.my)



## 2 APPLY TO MONASH

### Browse our scholarships

We're committed to attracting academic high achievers and producing internationally competitive graduates. Check out our extensive range of scholarships and financial aid.

[Turn to page 6](#)

### Ways into Monash

Start your journey to Monash by completing a foundation year, diploma or English language pathway. All you need to do is decide which is best for you.

[Turn to page 8](#)

### Explore our courses

We have a wide range of courses with diverse areas of study across seven schools. Whichever course you choose, you'll graduate with a globally recognised qualification as well as the skills and enterprising mindset to make positive change.

[Turn to page 19](#)

### More information

• Entry requirements	41
• A summarised guide	46
• How to apply	52

## 4 MAKE YOUR CHANGE

When you graduate, you join a network of over 490,000 Monash alumni across 150 countries who are making positive change. You'll be ready to make your own mark.







### 3 YOUR UNI LIFE

#### Emerge ready

Create a university experience based on what you love, as well as the new topics you're keen to explore. Combine your degree with international exchanges, work training programs, volunteering, and research opportunities.

[Turn to page 10](#)

#### Life at Monash

We want you to get the most out of your university life and that goes beyond what course you enrol in.

[Turn to page 13](#)

#### Study abroad

Experience the world as part of your Monash degree. Study for a semester or two at one of our Australia campuses or 140+ partner universities.

[Turn to page 14](#)

#### More information

- |                      |    |
|----------------------|----|
| • Living in Malaysia | 16 |
| • Accommodation      | 18 |

# YOUR JOURNEY STARTS HERE

It's an exciting time in your life as you start to consider what your future might look like.

At Monash, we're here to help. We can offer you quality teaching and fantastic facilities. As well as studying your course of choice, you'll have opportunities to enhance your learning experience through studying abroad, getting involved in clubs and societies, or completing work placements as part of your studies. There's so much we can offer you – let's get started.



# OUR MALAYSIA CAMPUS

Nestled in the heart of Sunway City, Monash University Malaysia offers a delightful combination of scenic open spaces and modern facilities in a student-friendly, cosmopolitan township.

You'll get the same outstanding education, access the same resources and global connections, and graduate with the same Monash degree as your peers in Australia.

It's the best of both worlds at a university closer to home.

## Here are more reasons why:

- Our degrees share the same syllabus with the Australia campuses, some of which are enhanced with a regional focus.
- Your Monash University degree will be recognised by the Ministry of Higher Education Malaysia and quality assured by Monash University Australia and the Australian Tertiary Education Quality and Standards Agency.
- You'll enjoy significantly lower tuition and living expenses than you would studying and living in Australia, the US or the UK.
- You'll be in proximity to countries in the Indian subcontinent and Asian regions.
- Our campus has excellent transport links, giving you full access to the city and international airports if you're looking for a weekend adventure to a neighbouring country.



### CLICK TO VIEW OUR LIVING HISTORY

We have been breaking new ground for more than 25 years.  
Discover our diverse and colourful history.

## A DYNAMIC UNIVERSITY



SELF-ACCREDITING  
PRIVATE UNIVERSITY



RATED BERDAYA SAING  
(COMPETITIVE)  
by the Ministry of Higher  
Education Malaysia (2022)

## OUR STUDENTS AND STAFF

**9700+**  
STUDENTS FROM  
77 COUNTRIES

**890+**  
STAFF FROM  
35 COUNTRIES

**21:1**  
STUDENT TO  
ACADEMIC STAFF RATIO

**85%**  
OF OUR ACADEMIC STAFF  
HOLD A DOCTORAL DEGREE

**27%**  
OF OUR ACADEMIC STAFF  
ARE EXPATRIATE

**27,500+**  
MONASH MALAYSIA GRADUATES

Statistics as of 31 December 2023



# SPACES TO INSPIRE

Our learning spaces are purpose-built for inspiration, collaboration and engagement.

Whether you're looking for an informal environment to socialise and group study, a focus zone to work on your assignments, or spending time in a lab to develop new skills with industry-standard equipment, you'll have an on-campus experience like no other.

## 1 The Hive

This spacious collaborative learning space is a crowd favourite. You'll find meeting rooms, quiet zones and open areas for you to have your study sessions, group discussions, or simply to relax and unwind with friends.

## 2 Medical Anatomy and Pathology E-Learning (MAPEL) Lab

Designed by Monash researchers, this award-winning lab supports technologically-enhanced learning with multi-touch smart tables and digital 3D visualisation images of human cadaveric anatomy and pathological specimens.

## 3 Monash Educational Gamification and Immersive Learning Experience (MEGILE)

This modern classroom offers an immersive and active learning experience with AR and VR learning objects. Manipulate, deconstruct and study anatomical spaces such as the middle ear cavity in a virtual environment.

## 4 Next Gen Learning Suite

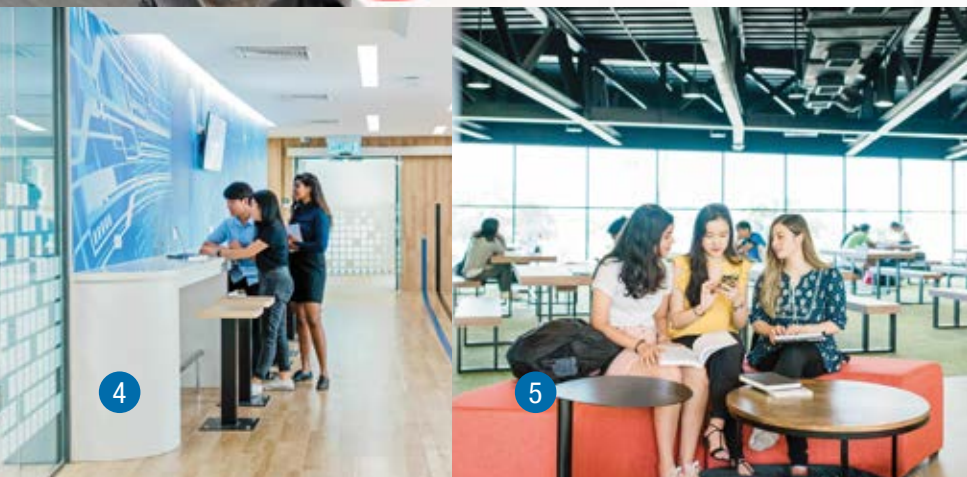
Find modern capabilities such as live-streaming and specialised video conferencing equipment for intercampus learning in the five computer labs that make up this learning suite. There are also two informal spaces to support group interaction and collaboration, empowering your student-centred learning.

## 5 Ideas Link and Mind Link

Retreat to the two-tier link deck for quiet study or to work on group assignments, and do it all with a view of Sunway City through the window walls.



**CLICK TO TAKE A VIRTUAL TOUR OF OUR CAMPUS.**



# SCHOLARSHIPS AND FINANCIAL AID

At Monash, we're committed to supporting bright minds who want to change the world for the better.

That's why we offer a wide range of scholarships, awards, bursaries and fee waivers to help you achieve your full potential.

## RM384.2m

**IN FINANCIAL ASSISTANCE  
AWARDED SINCE 2009**

(As of 31 December 2023)



	AVAILABILITY	ELIGIBILITY	BENEFITS
<b>MONASH HIGH ACHIEVER AWARD</b> For new students	All undergraduate courses except the Bachelor of Medical Science and Doctor of Medicine, and Bachelor of Pharmacy (Honours). Awarded automatically to eligible students at the time of admission.	Completed an Australian Year 12 qualification or an international senior secondary qualification accepted by the University with an outstanding Australian Tertiary Admissions Rank (ATAR) or equivalent, as deemed by the University. Met the minimum academic results of: <ul style="list-style-type: none"> <li>AUSMAT ≥ ATAR 98</li> <li>GCE Advanced Level ≥ 3 As</li> <li>CIMP ≥ 95%</li> <li>MUFY ≥ 89%</li> <li>IB ≥ 38</li> <li>SMA-3 Indonesia ≥ 9.5/GPA 3.66</li> <li>AISSC India ≥ 90%</li> <li>ISC ≥ 85%</li> <li>UEC ≥ 6 As</li> <li>STPM ≥ 11 points</li> <li>Senior SSC/State Board ≥ 95%</li> <li>Monash College Diploma Part 2 ≥ WAM 80.</li> </ul> Applicants who've already commenced tertiary studies or are transferring with credit exemptions and/or advanced standing aren't eligible to apply.	RM5000 per semester, subject to maintaining satisfactory academic progress.
<b>MONASH HIGH ACHIEVER AWARD</b> For continuing students	All undergraduate courses except the Bachelor of Medical Science and Doctor of Medicine, and Bachelor of Pharmacy (Honours).	Candidates are nominated by their schools based on their outstanding academic achievements (top 1% of the current undergraduate population of the school). Nominees must have completed one year of study (equivalent to two continuous semesters with a minimum of 48 credit points) at Monash University Malaysia without failing any units and having achieved an average score of 80% or more.	RM5000 per semester, subject to maintaining satisfactory academic progress.
<b>LEADERSHIP AWARD (UEC)</b>	All undergraduate courses except the Bachelor of Medical Science and Doctor of Medicine, Bachelor of Pharmacy (Honours), and one-year honours degrees.	Met the minimum admission requirements for the course. Achieved an average score of 85 (SM3 year) in extracurricular activities, and with a recommendation letter written in English from your school principal, teacher or counsellor only.	RM4000 per semester, subject to maintaining satisfactory academic progress.
<b>OUTSTANDING ACHIEVER AWARD (UEC)</b>	All undergraduate courses except the Bachelor of Medical Science and Doctor of Medicine, Bachelor of Pharmacy (Honours), and one-year honours degrees.	Met the minimum admissions requirements for the course. Achieved 5A1s in UEC and an average score of 85 (SM3 year) in extracurricular activities, and with a recommendation letter written in English from your school principal, teacher or counsellor only.	RM7500 per semester, subject to maintaining satisfactory academic progress.
<b>MONASH EQUITY SCHOLARSHIP</b> Tuition Fee Waiver and/or Stipend	All undergraduate courses except the Bachelor of Medical Science and Doctor of Medicine, and Bachelor of Pharmacy (Honours). Supports financially deserving students.	Met the minimum admission requirements for the course. Available only for Malaysian citizens and permanent residents.	100% tuition fee and associated fees waiver, a one-off laptop allowance, plus a monthly stipend for basic living expenses. <i>OR</i> 50-100% tuition fee waiver and a one-off laptop allowance.
<b>MONASH SPORTS SCHOLARSHIP</b> Tuition Fee Waiver	All undergraduate courses except honours degrees.	<ul style="list-style-type: none"> <li>Malaysian national athletes with a verification letter from the National Sports Council of Malaysia.</li> <li>Met the minimum admission requirements for the course.</li> </ul>	RM5000 per semester, subject to maintaining satisfactory academic progress and sporting performance.
<b>MONASH BURSARIES FOR INDONESIAN STUDENTS</b>	All undergraduate courses except the Bachelor of Medical Science and Doctor of Medicine, and Bachelor of Pharmacy (Honours).	Indonesian students who have completed the Sekolah Menengah Atas 3 qualification with a minimum score of 9.0 or GPA 3.5 to 3.65 (only your actual examination results will be considered).	RM2500 tuition fee waiver per semester. A total of RM5000 for the first year of study.
<b>GRADUATE RESEARCH PATHWAY SCHOLARSHIP</b> Tuition Fee Waiver	All honours degree courses.	Distinction average in prior study from a recognised university, and met all other entry requirements. Selection is based on academic achievement for each discipline.	100% or partial tuition fee waiver.
<b>SIBLING DISCOUNTS</b>	All undergraduate courses except honours degrees.	<ul style="list-style-type: none"> <li>All siblings must be enrolled in a full study load and have not obtained any external scholarships or financial assistance (except PTPTN Loan).</li> <li>The sibling paying the higher tuition fees will be eligible for the 10% waiver.</li> <li>A sibling enrolled in the Bachelor of Medical Science and Doctor of Medicine, Bachelor of Pharmacy (Honours) and Bachelor of Engineering (Honours) will be eligible for a maximum discount of RM5000 per annum.</li> <li>If one sibling is a recipient of the Monash High Achiever Award, other sibling(s) are eligible for the 10% tuition fee waiver in the same semester.</li> </ul>	10% tuition fee waiver.



	AVAILABILITY	ELIGIBILITY	BENEFITS
<b>PATHWAY</b>			
<b>ME BURSARY</b>	Monash English.	Received a full offer for enrolment into the 10-week Monash English program.	RM1000 tuition fee waiver.
<b>MONASH ENGLISH-BACHELOR OF ENGINEERING (HONOURS) FEE WAIVER</b>	Monash English (10- or 20-week)	Must be enrolled into the Bachelor of Engineering (Honours) commencing Semester 1, 2025 and onwards.	Full tuition fee rebate for Monash English. The amount reimbursed will be deducted from the tuition fees for the Bachelor of Engineering (Honours) over the first year at the rate of 50% in the first semester and 50% in the second semester.
<b>BUSINESS</b>			
<b>BACHELOR OF DIGITAL BUSINESS BURSARY</b>	Bachelor of Digital Business Bursary only.	Received a full offer for enrolment into the course.	10% tuition fee waiver for the duration of the course (three years), subject to meeting the maintenance conditions.
<b>ENGINEERING</b>			
<b>FEMALE IN ENGINEERING SCHOLARSHIP</b> Tuition Fee Waiver	Bachelor of Engineering (Honours) only. <i>Limited to 20 recipients per year.</i>	New female students who have completed an Australian Year 12 qualification or an international senior secondary qualification accepted by the University with an outstanding Australian Tertiary Admission Rank (ATAR) or equivalent, as determined by the University.  Met the minimum academic results of: <ul style="list-style-type: none"> <li>• AUSMAT ≥ ATAR 97</li> <li>• GCE Advanced Level ≥ 2 As, 1B</li> <li>• CIMP ≥ 94%</li> <li>• MUFY ≥ 88%</li> <li>• IB ≥ 37</li> <li>• SMA-3 Indonesia ≥ 9.4/GPA 3.65</li> <li>• AISSC India ≥ 89%</li> <li>• ISC ≥ 84%</li> <li>• UEC ≥ 5 As</li> <li>• STPM ≥ 10 points</li> <li>• Senior SSC/State Board ≥ 94%</li> <li>• Monash College Diploma ≥ WAM 79.</li> </ul>	RM3000 tuition fee waiver per semester for a total of RM6000 for the first year of study.
<b>MEDICINE AND HEALTH SCIENCES</b>			
<b>MONASH MEDICINE BURSARY</b>	Bachelor of Medical Science and Doctor of Medicine. <i>Limited to 10 recipients per intake.</i>	Received a full offer for enrolment and met the selection criteria.	RM5000 per semester, subject to meeting satisfactory academic progress. A total of RM50,000 for five years of study.
<b>PHARMACY</b>			
<b>MONASH PHARMACY EQUITY SCHOLARSHIP</b> Tuition Fee Waiver and/or Stipend	Bachelor of Pharmacy (Honours) only.  Supports financially deserving students.	Met the minimum admission requirements for the course. Available only for Malaysian citizens and permanent residents.	100% tuition fee and associated fees waiver, a one-off laptop allowance, plus a monthly stipend for basic living expenses. <i>OR</i> 50-100% tuition fee waiver and a one-off laptop allowance.
<b>MONASH PHARMACY EXCELLENCE SCHOLARSHIP</b> Tuition Fee Waiver	Bachelor of Pharmacy (Honours) only.	Met the minimum admission requirements for the course. Participation in a non-academic pursuit, extracurricular activities, and community engagement initiatives are an added advantage.	Either a 50% or 25% tuition fee waiver for the duration of the course (four years).
<b>BACHELOR OF PHARMACEUTICAL SCIENCE BURSARY</b>	Bachelor of Pharmaceutical Science only.	Received a full offer for enrolment into the course.	RM10,000 tuition fee waiver (at RM5000 per semester) for the first year, subject to meeting the maintenance conditions.
<b>BACHELOR OF PHARMACEUTICAL SCIENCE (HONOURS) BURSARY</b>	Bachelor of Pharmaceutical Science (Honours) only.	Received a full offer for enrolment into the course.	10% tuition fee waiver for the duration of the course (one year), subject to meeting the maintenance conditions.
<b>SCIENCE</b>			
<b>BACHELOR OF APPLIED DATA SCIENCE BURSARY</b>	Bachelor of Applied Data Science only.	Received a full offer for enrolment into the course.	10% tuition fee waiver for the duration of the course (three years), subject to meeting the maintenance conditions.

All scholarships, awards, bursaries and fee waivers listed here apply only to full-time study at Monash University Malaysia unless stated otherwise; are subject to terms and conditions, which may be reviewed by the University from time to time; and are mutually exclusive and cannot be combined. Students with other external scholarships or financial assistance (except PTPN Loan) will not be eligible. Please visit [monash.edu.my/scholarships](https://monash.edu.my/scholarships) for more details, including application deadlines, or to make an appointment with our Scholarships and Study Loan Office.

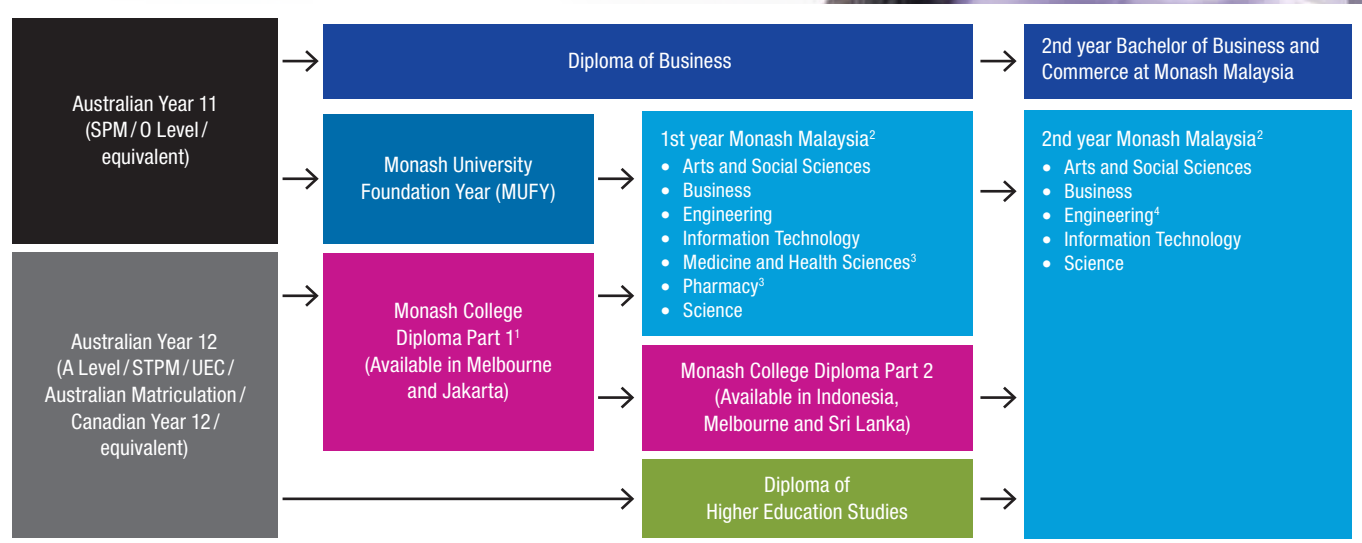
# WAYS INTO MONASH

Take the first step to success.

We offer a few academic pathways into Monash undergraduate degrees:  
Monash University Foundation Year, Diploma of Higher Education Studies and Diploma of Business.

All options:

- provide a direct pathway into Monash
- demonstrate our student-centred teaching style
- help you develop lifelong learning skills.



## Monash University Foundation Year

JPT/BPP(K) (R3/0011/3/0132/A5694) 10/29

Prepare for success at Monash University Malaysia with direct entry into undergraduate degrees from any school. Equivalent to Australian Year 12, this course provides a flexible length of study through modular teaching and learning.

### AT A GLANCE

**LOCATIONS** Sunway College Kuala Lumpur, DK265-01 (W); Sunway College Johor Bahru, DK 265 (J)

**INTERNATIONAL LOCATIONS** Jakarta International College, Indonesia; Universal College Lanka, Sri Lanka; Virscend Education, China; SIM Global Education, Singapore

**DURATION** 1 YEAR

**INTAKES** JANUARY, JULY AND AUGUST

### BENEFITS

- Recognised by universities in Australia, New Zealand and the UK.
- A semesterised study mode that offers flexibility to improve.
- Broad pathway to any Monash school of your choice.

[monash.edu.my/mufy](https://monash.edu.my/mufy)

## Diploma of Higher Education Studies

KPT/JPT (R2/140/6/0007) 01/28 - MQA/SWA0654

You can still study for an undergraduate course through an alternative pathway if your pre-university/Year 12/equivalent scores fall below the normal entry requirements. Upon successful completion<sup>5</sup> of this course, you may be eligible to transfer into the second year of the following Monash degrees:

### Arts and Social Sciences

- Bachelor of Arts and Social Sciences
- Bachelor of Digital Media and Communication.

### Business

- Bachelor of Business and Commerce.

### Information Technology

- Bachelor of Computer Science
- Bachelor of Computer Science in Data Science.

### Science

- Bachelor of Science
- Bachelor of Food Science and Technology
- Bachelor of Medical Bioscience.

### AT A GLANCE

**DURATION** 1 YEAR (FULL-TIME)

**INTAKES** FEBRUARY, JULY AND OCTOBER

**FEES** RM38,880 (non-science stream)

RM43,680 (science stream)

Malaysian student

RM44,640 (non-science stream)

RM50,400 (science stream)

International student

2025 fees per year

### BENEFITS

- Develop important academic literacy skills, sound academic writing competencies, and insight into the world of academic research.
- Transition to a Monash degree through a gradual and supportive approach to university learning.
- Receive a Graduate Certificate in the Diploma of Higher Education Studies after successfully completing your first year of study, followed by a bachelor's degree from your destination school when you graduate. This means that you'll be awarded two separate qualifications from Monash within the same duration required to complete your bachelor's degree.

[monash.edu.my/dhes](https://monash.edu.my/dhes)

<sup>1</sup> Progression to Diploma of Higher Education Studies subject to approval.

<sup>2</sup> Subject to meeting Monash University entry requirements and subject prerequisites.

<sup>3</sup> Not available for Monash College Diploma Part 1.

<sup>4</sup> Available only for Monash College Diploma Part 2 students.



## Diploma of Business

KPT/JPT (N/0414/4/0260) 3/29 - MQA/PSA 17180

Specialise from day one with a Diploma of Business and fast-track to the second year of the Bachelor of Business and Commerce at Monash. With the guidance of a dedicated team of educators, you'll learn how to work independently, think critically, and exercise academic skills while being introduced to the fundamentals of theories and practices in business.

### AT A GLANCE

**DURATION** 2 YEARS (FULL-TIME)

**INTAKES** JULY AND OCTOBER

**FEES** RM34,080 Malaysian student  
RM39,360 International student

2025 fees per year

### BENEFITS

- Advanced understanding of theories and applications in business practices.
- 100% in-semester assessments complemented with project-based learning.
- Blend of theory-based and practical education will give you a well-rounded ability to apply valuable skills and knowledge in the business world if you decide to enter the workforce after completing this course.
- Receive two qualifications – a diploma and a degree – from Monash in just four years when you graduate from the Bachelor of Business and Commerce.

 [monash.edu.my/diploma-business](https://monash.edu.my/diploma-business)

## Monash English

R/KJP/00617 (03/25) - MQA/SWA0118

If you've met our academic requirements but narrowly missed the English language requirements, Monash English can help you develop the skills you need to succeed. Once you've successfully completed the program, you'll gain direct entry into selected Monash degrees<sup>6</sup>.

### MONASH ENGLISH (20-WEEK)

**DURATION**

**20 WEEKS**

**INTAKES**

**FEBRUARY AND AUGUST**

**FEES**

RM11,200 Malaysian student  
RM11,600 International student  
2025 fees for full course

**CONTACT HOURS**

**400 HOURS**

consisting of four hours of daily study on weekdays.

### SKILLS YOU'LL DEVELOP

- Communicate effectively in social conversations, academic discussions and presentations.
- Improve your grammar, vocabulary and pronunciation.
- Improve your writing, reading and listening skills.
- Understand, apply and explain theories in your degree program.
- Write summaries and short reports in an academic style.
- Understand and apply academic integrity.
- Learn how to respond to feedback.
- Become an independent learner.

### MONASH ENGLISH (10-WEEK)

**DURATION**

**10 WEEKS**

**INTAKES**

**MAY AND OCTOBER**

**FEES**

RM6700 Malaysian student  
RM7400 International student  
2025 fees for full course


**CONTACT HOURS**

**200 HOURS**

consisting of four hours of daily study on weekdays.

### SKILLS YOU'LL DEVELOP

- Advanced reading skills to critically read and evaluate academic texts.
- Effective listening and note-taking skills to understand spoken texts on a variety of current issues.
- Strategies to understand, apply and explain relevant theories in your destination course.
- Research skills, including strategies to search, filter and evaluate a variety of texts to obtain credible and reliable information.
- Communicate effectively in social conversations, academic discussions and deliver presentations.
- Write reflective essays and research reports which are the required genres of writing in Monash's undergraduate and postgraduate programs.

 [monash.edu.my/monash-english](https://monash.edu.my/monash-english)

<sup>5</sup> Pass each unit in the diploma and achieve the minimum average mark required for the destination course. Students are required to meet a minimum weighted average mark (WAM) of 50 to qualify for progression to the Arts and Social Sciences, Business and Science courses and a WAM of 60 for Information Technology.

<sup>6</sup> Monash English is not applicable for the Bachelor of Medical Science and Doctor of Medicine. The 10-week Monash English is not applicable for the Bachelor of Human Nutrition. Additionally, you may be required to meet the minimum English requirements set by the Malaysian government. Turn to pages 44 and 45 to learn more.



# EMERGE READY

We challenge you to let your education change your mindset – think differently about anything and everything to make your impact in the world.

By choosing Monash you've chosen a university that's ranked in the world's top 50. You'll study alongside world-class educators and researchers in a degree or double degree designed to provide you with breadth, flexibility and choice.

But employers want more than great results from a leading university. They want to hire graduates who have experience beyond the classroom. Graduates with broad networks and a deep understanding of the world. Graduates who understand industry and have a passion for discovery.

This is why our courses and platforms offer work-integrated learning experiences and engagement with industry. You'll develop an enterprising mindset and hone your employability skills, giving you an edge over others – ready to make your impact on the world.

## Study abroad

Take your education global and go for a semester exchange at one of our international campuses or partner universities.

## Research and discovery

Work on world-leading research and discovery projects through our Undergraduate Research Program.

## Hands-on experience

Fieldwork, study tours, work placements or internships are built into your studies. Incorporating professional experience in your studies helps you to develop employability skills including communication, teamwork, leadership, negotiation and problem-solving. You'll also gain an understanding of the workplace culture and increase your network of contacts.

## Employment

From the moment you join Monash, we offer an end-to-end experience that builds your capability and develops your employability. You'll develop in-industry experience and build your networks and relationships – all of which puts you in the best position to pursue your goals.

- Strengthen your **employability and leadership skills** with Leap into Leadership Online modules.
- Choose from over **5000 active work opportunities across 28 countries** through Monash job portals.
- Get **professional support** from our career experts.
- Attend **internship fairs**, employer networking sessions, career seminars and workshops.
- Track your employability skills and **show employers that you have what they're looking for** with our award-winning Student Futures platform.
- Receive **career advice and insights** from experienced Monash alumni.

## Professional networks

And our support won't end when you graduate. You'll always be connected with and supported by us, through our active alumni network and continued professional education.

The world needs ready. Whatever your degree, we'll ensure you're ready to create your future today.



I completed a three-month internship at a renowned think tank here in the country, namely the Institute for Democracy and Economic Affairs (IDEAS) Malaysia. I was a research intern under the Economics and Business Unit, where I had the opportunity to work on numerous projects with expert researchers.

The hands-on experience piqued my interest and passion in conducting evidence-based research, which very aptly prepared me for my full-time role as a Research Executive at IDEAS Malaysia upon completing my last semester at Monash.”

### MELANIE CHAN-LE

Bachelor of Arts and Social Sciences (majoring in Global Studies and Communications)  
Due Diligence Analyst, S-RM





## MONASH AROUND THE WORLD

Our internationally-recognised degrees get you into the global workplace. Many of our alumni have achieved excellence in their field, becoming leaders in their chosen professions no matter where they go.



**FIGO CHIN WEN HUI**

Bachelor of Mechatronics  
Engineering (Honours)  
DT Risk and Compliance Manager  
General Electric, USA



**HELEN SNEHA JAMBUNATHAN**

Bachelor of Arts (Writing and  
International Studies)  
Bachelor of Arts (Honours)  
Associate Insight Director  
Canvas8, UK



**TIM MAK**

Bachelor of Science (Honours)  
in Biotechnology  
Principal Scientist  
DSM, Switzerland



**JESSICA JENNA TAN**

Bachelor of Communication  
Director of Digital Marketing  
and Content  
Hilton, Malaysia



**SONIA FERNANDEZ**

Bachelor of Science  
(Medical Bioscience)  
Associate Director  
Michael Page, Thailand



**MUHAMMAD HAFIZ RAMLI**

Bachelor of Mechanical Engineering  
(Honours)  
Propulsion Engineer  
Boeing, Malaysia



**DR TANG MEI SAN**

Bachelor of Medicine and  
Bachelor of Surgery (MBBS)  
Clinical Pathology Resident Physician  
Barnes-Jewish Hospital, USA



**MAXINE LIM JEN AI**

Bachelor of Arts  
(Communications and International Relations)  
Regional Communications Manager  
Nestlé, Switzerland



**LUI MEI YI**

Bachelor of Pharmacy (Honours)  
Immunology Medical Lead  
Novartis, Singapore



**VISHAAN KUMAR KUMARASAMY**

Bachelor of Business and Commerce  
Senior Auditor  
Ernst & Young, Singapore



**HARIKA MARPOHNO**

Bachelor of Business and Commerce  
and Bachelor of Communication  
Investment Data Specialist  
Vanguard, Australia









# LIFE AT MONASH

## YOUR STUDENT EXPERIENCE

Start your day with a short stroll to class. Grab a pastry at the coffee cart. Study with your coursemates at the library. Sign up for a workshop after class or attend a public lecture. Join a club and make new friends. Build a student life that's exciting and fulfilling to you.

### Clubs and societies

A huge part of your student life will be in the connections you make. We offer a myriad of ways to connect with other students. There are over 60 clubs and societies that run events and activities throughout the year where you can connect with other people and cultures.

### Sports and fitness

The Monash Sports Centre offers a gym, an open field, a rock climbing wall, multi-sport courts, and pool and foosball tables at the attached student lounge. If you're feeling competitive, the Monash Cup is an annual campus-wide sports event where four houses compete in about 20 sporting games and activities.

### More learning opportunities

Participate in workshops and competitions or attend talks and public lectures organised by schools, clubs and industry partners. This is a great way to learn something new or build on what you've learnt in the classroom.

### Academic services

Find the latest resources for your learning and research needs at our Library and Learning Commons. Our Learning Skill Advisors can help you improve your academic performance and study approaches, and we also regularly organise study programs.

 [monash.edu.my/library](https://monash.edu.my/library)

### Career support services

We want you to develop your employability skills and we offer skills development workshops, professional experiences, and job opportunities. You can connect with your peers through our peer-mentoring program too.

### Health, wellbeing and safety

Academia may be a major part of your student life but we recognise what happens around you can matter just as much. Staying physically and mentally healthy is important, and we offer medical and counselling services on campus. We also offer disability support services. Our security team works round the clock, so you can be sure to have assistance available to you if you're staying back late to study.

 [monash.edu.my/wellness](https://monash.edu.my/wellness)

### Religious facilities

There are many places of worship within Sunway City including mosques, temples, churches and other religious centres. On campus, there's a Muslim prayer room and a multi-faith centre available to all denominations.

 [monash.edu.my/religious-facilities](https://monash.edu.my/religious-facilities)

### International student support

Moving to a new country can be difficult but we're here to help you every step of the way. Our student advisers can assist you with accommodation, medical insurance, places to eat and other general support to help you settle in. We also welcome all new international students with a free airport pick-up service to take you to your accommodation.

 [monash.edu.my/international-students](https://monash.edu.my/international-students)



# CHANGE HOW YOU LEARN. STUDY ABROAD.

When you choose to study overseas, it's more than your surroundings that change – you'll experience new cultures and enhance your global perspective. Take the leap and broaden your mind.

## International exchange

Choose from more than 140 partner universities around the world, and graduate with a degree that's studied in different continents – all while paying your regular course fees to Monash University Malaysia.

## Try Australia

Because you're already a Monash student, studying at our Australian campuses is the easiest way to see the world. The Global Intercampus Program lets you spend a semester in Melbourne with no added costs to your regular course fees.

## Go on an Italian adventure

Spend anywhere between three weeks or up to a semester on the Monash Global Campus Intensives program at the Monash Prato Centre in Italy, one of our most popular faculty overseas program destinations.

## Seize the day

Use your summer or winter break to go on short study tours overseas, typically around two to four weeks, at selected partner universities.

## Go global

Build a professional network while you're still studying and head on an award-winning study tour of New York City. Our Global Discovery Program taps into the expertise of our influential New York City-based alumni, giving you the unique opportunity to learn from key corporate leaders and decision-makers.

 [monash.edu/global-discovery](https://monash.edu/global-discovery)

## Unique research opportunities

Work with world-renowned professors on cutting-edge research projects and experience life in a leading research laboratory overseas.

## Get a taste of adventure

Join a Monash-led study tour, typically spanning two weeks, that takes you somewhere in Asia or Europe.



CLICK HERE to learn more



**KONG SHI HAO (JAMES)** (front row, far left)

Bachelor of Pharmacy (Honours)  
Monash Global Discovery Program to New York, USA





My exchange to the Netherlands was amazing and I had the time of my life. I've learnt so much about this world and myself. I've been to 14 countries, tried delicious food and new things, and made friends from almost every region. I'm proud of myself for choosing to experience this alone with the goal of staying out of my comfort zone. You have to engage with people around you to understand who you really are and what you really like to do."

#### ELVEN TEE ZI JIE

Bachelor of Business and Commerce  
Maastricht University, Netherlands



This has been such a rewarding experience and truly one of the best decisions I've made. I got to embrace a whole new culture and way of living as a local in South Korea, and I felt like I belonged to a tightly-knit community because of how inclusive the local students are. What I'll truly remember about my time abroad is the unexpected lifelong friendships and connections I've made with people from different parts of the world."

#### SAFIYYA BINTI SHAHRUL NIZAR

Bachelor of Business and Commerce  
Korea University, South Korea



Studying abroad in Melbourne has been life-changing. The academic experience was enriching and broadened my view of the global community, but perhaps the most significant part of my time abroad was exploring the city and experiencing the local culture. I attended musical theatre shows, visited museums and galleries, and wandered the streets taking in the spectacular architecture of the vibrant and bustling metropolis. This experience has left an indelible mark on my life."

#### YVIEN CHEW

Bachelor of Psychological Science and Business  
Monash Australia, Clayton and Caulfield campuses



Being the very reason why I even chose Monash in the first place, studying abroad is truly a one-of-a-kind experience that I think every student should go for. Stepping out of your comfort zone, learning independence, and expanding your connections are just among the many benefits of this program! Loved it!"

#### ETHIENNE WONG

Bachelor of Psychological Science and Business  
University of Warwick, UK



The Global Discovery Program was a truly eye-opening and humbling journey. Being in New York and meeting Monash alumni who are influential leaders in their fields made me realise the vastness of the world. Through engaging discussions with both the alumni and my fellow scholars, I challenged my thinking and rediscovered myself. This program transformed me, and I feel better prepared to embrace the uncertainties that lie ahead as I move forward in life."

#### TZE TING YONG

Bachelor of Pharmacy (Honours)  
Monash Global Discovery Program  
to New York, USA



My exchange was truly an unforgettable journey that reignited my passion for learning. With every event and class, I found myself outside of my comfort zone yet the people were engaging enough that I felt compelled to try my best. I expanded my knowledge through networking and engaging with local experts from wineries to the United Nations. I am eternally grateful for this opportunity and continue to use the lessons I have learnt to grow."

#### CLIARA VALESKA CAMERON JOUBERT

Bachelor of Arts and Social Sciences  
Monash Global Campus Intensives Program  
to Prato, Italy



# LIVING IN MALAYSIA



 Petronas Twin Towers, Kuala Lumpur



 George Town, Penang



 Batu Caves, Selangor



 Mount Kinabalu, Sabah





## Malaysia is a wonderfully unique country that has captivated generations with its natural beauty, cultural diversity and the warmth of its people. It's a great destination for learning and adventure.

Located in the economic pulse of Southeast Asia, Malaysia is the leading tourist and commercial destination in Asia. It's politically stable, geographically safe and has a warm tropical climate. And with a diverse population of various ethnicities, cultures and backgrounds, Malaysia offers no shortage of flavourful cuisine, vibrant festivals and heritage traditions. You'll always have places to go, people to meet and treasures to discover.

### Studying in Sunway

Sunway City is a friendly and safe township where you'll have everything you need within reach. Eateries, hotels, banks, a medical center, a shopping mall, and even a water theme park are all easily accessed using a monitored elevated pedestrian walkway or public transport.

Want to go farther? From Sunway City, you're less than an hour away by train to the Kuala Lumpur city centre where you can visit iconic landmarks and attractions such as the Petronas Twin Towers, Central Market, Islamic Arts Museum, KL Bird Park and more.

### Cost of living

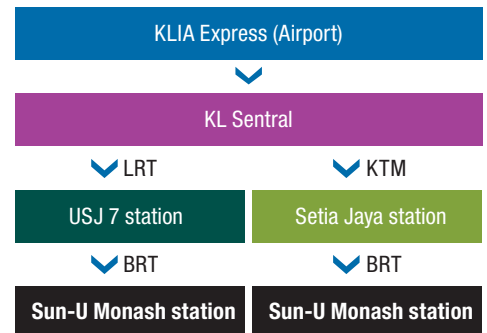
Before you begin your studies at Monash, it's a good idea to plan and prepare a budget. Below are some costs associated with living and studying in Malaysia, and should be used as an approximate guide. These figures (in Malaysian Ringgit) are estimates only, and may vary depending on your personal lifestyle choices. Generally, Malaysia is an affordable country.

- |                      |                           |
|----------------------|---------------------------|
| • Accommodation      | RM330 to RM1500 per month |
| • Phone and internet | RM30 to RM80 per month    |
| • Groceries          | RM50 to RM80 per trip     |
| • Eating out         | RM6 to RM50 per meal      |
| • Clothing           | From RM30                 |
| • Entertainment      | From RM12 per event       |

 [monash.edu.my/living-costs](https://monash.edu.my/living-costs)

### Getting to Monash

Our campus in Sunway is well connected with great transport links. Whether you choose to drive or take public transport, getting to uni is incredibly easy.



### Within Sunway City

Take the BRT electric bus service to key locations within Sunway City, or opt for the free shuttle bus service that runs every hour.



#### OPERATION HOURS

Monday to Saturday: 7.00am to 10.15pm  
Sunday: 9.00am to 10.15pm

- Pyramid Tower Hotel (Sunway Pyramid and Sunway Lagoon)
- Sunway Resort Hotel & Spa
- Sunway Metro (bus stop)
- Sunway Lagoon BRT Station
- Sunway Geo Residences
- Bay Rocks
- A Marine/Nautica
- La Costa
- Monash Residence
- **Sun-U Monash BRT Station**
- Sun-U Residence
- Sunway Medical
- Lagoon Club (bus stop)



Gunung Mulu National Park, Sarawak



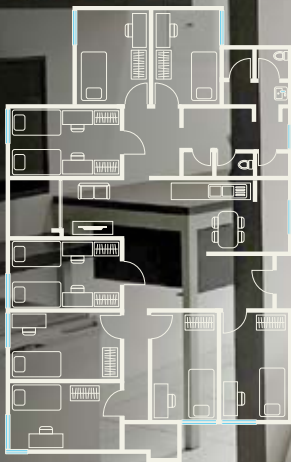
Cameron Highlands, Pahang



Langkawi, Kedah



# BE AT HOME



Sample unit layout for Waterfront Residence.



**CLICK TO TAKE  
A VIRTUAL TOUR.**



Start with a short stroll to class before lunch. Stay at the library until closing time. The gym, sports fields and even restaurants – they're all on your doorstep if you live on campus.

	WATERFRONT RESIDENCE	SUN-U RESIDENCE	SUN-U APARTMENT
<b>Distance from campus</b>	3 minutes	8 minutes	11 minutes
<b>Rooms</b>	<ul style="list-style-type: none"> <li>• Twin (100-130 sq ft)</li> <li>• Single (100-130 sq ft)</li> <li>• Studio (280-380 sq ft)</li> </ul>	<ul style="list-style-type: none"> <li>• Twin (120-250 sq ft)</li> </ul>	<ul style="list-style-type: none"> <li>• Quad (245 sq ft)</li> <li>• Twin (125-140 sq ft)</li> </ul>
<b>Air-conditioned</b>	Yes	Yes	Option for twin only
<b>In-room features</b>	Single/queen/king bed, wardrobe with mirror, study table and chair, notice board, book rack, mini fridge, Wi-Fi, LCD TV (single), side table (studio), and bathroom (single ensuite and studio).	Single bed, wardrobe, study table and chair, bookshelf, and Wi-Fi.	Single bed, wardrobe, study table and chair, bookshelf, Wi-Fi, ceiling fan, and air-conditioning (selected twin).
<b>Unit features</b>	Kitchenette, living area, and common bathrooms with heated showers.	Kitchenette, living area, and common bathrooms with heated showers.	Kitchenette, living area, and common bathrooms with heated showers.
<b>General facilities</b>	Swimming pool, basketball court, outdoor gazebo and BBQ area, launderette, learning hub, student lounge, gym, par course, communal kitchen, dining area, games and movie rooms, food outlets, car park, free shuttle service, covered elevated walkway, ATM machines and 24-hour security.	Olympic-sized swimming pool, badminton and squash courts, convenience store, BBQ area, prayer room, visitor's lounge, study rooms, launderette, poolside cafe, vending machines, car park, covered elevated walkway, and 24-hour security.	Badminton court, BBQ area, air-conditioned student lounge, study room/area, prayer room, launderette, car park, and 24-hour security.
<b>Monthly rate<sup>1</sup></b>	<ul style="list-style-type: none"> <li>• Twin: RM860 - RM1100</li> <li>• Single: RM1050 - RM1650</li> <li>• Single ensuite: RM1900</li> <li>• Studio: RM2300</li> </ul>	<ul style="list-style-type: none"> <li>• Twin: RM780 - RM860</li> </ul>	<ul style="list-style-type: none"> <li>• Quad: RM420 - RM500</li> <li>• Twin: RM620 - RM860</li> </ul>

<sup>1</sup> Rates are correct at time of publication. For the latest information, please visit [residence.sunwayhouse.com.my](https://residence.sunwayhouse.com.my). All photos above were taken at Waterfront Residence.



# OUR COURSES

Choosing what to do at uni is an adventure.

It's about discovery, passion and realising your dreams. At Monash, we offer a range of courses that allow you to fulfil these ambitions. Use the index below to find your course of interest.

 [monash.edu.my/study](https://monash.edu.my/study)

## ARTS AND SOCIAL SCIENCES 20

<b>Arts and Social Sciences</b>	<b>21</b>
• Communication	
• Film, television and screen studies	
• Gender studies • Global studies • Psychology	
• Public relations (minor) • Writing (minor)	
<b>Digital Media and Communication</b>	<b>21</b>
<b>Arts (Honours)</b>	<b>21</b>

## BUSINESS 22

<b>Business and Commerce</b>	<b>23</b>
• Accountancy	
• Applied economics	
• Banking and financial management	
• Business analytics	
• Business and commerce studies	
• Digital marketing	
• Econometrics and business statistics	
• Financial technology (FinTech)	
• International business management	
• Management	
• Strategic marketing	
• Business law and taxation (minor)	
• Sustainability and responsible management (minor)	
<b>Digital Business</b>	<b>23</b>
<b>Business and Commerce (Honours)</b>	<b>23</b>

## DOUBLE DEGREES 24

<b>Business and Commerce and Computer Science</b>	<b>25</b>
<b>Business and Commerce and Digital Media and Communication</b>	<b>25</b>

## ENGINEERING 26

<b>Engineering (Honours)</b>	<b>27</b>
• Chemical engineering	27
• Civil engineering	27
• Electrical and computer systems engineering	27
• Materials engineering	27
• Mechanical engineering	27
• Robotics and mechatronics engineering	27
• Software engineering	27

## INFORMATION TECHNOLOGY 28

<b>Computer Science</b>	<b>29</b>
• Algorithms and data structures	
• Artificial intelligence • Cybersecurity	
• Data analytics • Deep learning	
• Entrepreneurship • Image processing	
• Malicious AI and dark side security	
• Mobile application development	
<b>Computer Science in Data Science</b>	<b>29</b>
<b>Computer Science (Honours)</b>	<b>29</b>

Software engineering is offered in collaboration with the School of Engineering. See page 27 for more information.

## MEDICINE AND HEALTH SCIENCES 30

<b>Medicine</b>	<b>31</b>
<b>Medical Science (Honours)</b>	<b>31</b>
<b>Human Nutrition</b>	<b>31</b>
<b>Psychology</b>	<b>31</b>
<b>Psychology and Business</b>	<b>31</b>
<b>Psychology (Honours)</b>	<b>31</b>

## PHARMACY 32

<b>Pharmacy (Honours)</b>	<b>33</b>
<b>Pharmaceutical Science</b>	<b>33</b>
<b>Pharmaceutical Science (Honours)</b>	<b>33</b>

## SCIENCE 34

<b>Science</b>	<b>35</b>
• Applied microbiology	
• Biotechnology	
• Food science and business	
• Genomics and bioinformatics	
• Medicinal chemistry	
• Psychology	
• Tropical environmental biology	
• Chemistry (minor)	
• Genetics and genomics (minor)	
<b>Applied Data Science</b>	<b>35</b>
<b>Food Science and Technology</b>	<b>35</b>
<b>Medical Bioscience</b>	<b>35</b>
<b>Science (Honours)</b>	<b>35</b>



## ARTS AND SOCIAL SCIENCES

### INNOVATE, CHALLENGE AND TRANSFORM

To change the world, you need to see it differently. We'll expose you to urgent social and cultural issues, and we'll teach you how to think, not what to think. And as a bold critical thinker, you'll be career-ready, able to develop action plans to solve problems.

### THINK GLOBAL, KNOW LOCAL

We'll teach you everything from local film history, Southeast Asian politics, to digital culture in Asia. We'll connect you to creatives and entrepreneurs, and take you on guided study tours in the region. You'll have a broad global understanding with in-depth, local knowledge.



**CLICK HERE TO VIEW  
THE COURSE GUIDE.**

[monash.edu.my/sass](https://monash.edu.my/sass)

### INDUSTRY EXPERIENCE

We invite creatives, entrepreneurs and change-makers into the classroom. We offer internships with industry partners, and real-world simulations of media campaigns and political problem-solving. You'll be an intellectually agile, professionally skilled, and community-minded leader.

### CAREER PATHS

- Journalism, media, public relations
- Marketing, advertising, business research
- Consulting, international trade, training and development
- Diplomacy, foreign affairs and politics
- Production, direction, film, television and video.

RANKED

**NO.47** IN THE  
WORLD  
FOR COMMUNICATION  
AND MEDIA STUDIES

RANKED

**NO.64** IN THE  
WORLD  
FOR ARTS AND  
HUMANITIES

RANKED

**TOP 100** IN THE  
WORLD  
FOR ANTHROPOLOGY,  
POLITICS AND HISTORY

QS World University Rankings by Subject 2023



After finishing my diploma, I was looking to expand my knowledge of social and political theory. Monash's Arts and Social Sciences program was exactly what I was looking for. The units in this course offered diverse and unique perspectives about social life. I have gained academic knowledge and learned a new way of thinking about the world."

#### KYRISHA SUNDHARAJAN

Bachelor of Arts and Social Sciences  
Bachelor of Arts (Honours)  
Monash High Achiever Award  
Graduate Research Pathway Scholarship  
Global Intercampus Program

Kyrisha's research is about government policy and music concerts in Malaysia; how the live music industry is constrained by policy and how stakeholders navigate these constraints. With her academic and research experience, her career goal is to work in journalism. She believes journalists are at the forefront of social change and that they play a part in holding institutions accountable to the public and shaping discourse around social issues.





## Bachelor of Arts and Social Sciences

KPT/JPT (R2/220/6/0014) 01/26 - MQA/SWA0103

**DURATION 3 YEARS**

**INTAKE FEBRUARY, JULY AND OCTOBER**

**FEES RM41,760**

Malaysian student

**RM48,480**

International student

2025 fees per year



**CLICK HERE  
FOR MORE  
COURSE DETAILS.**

**Workplaces of the future need innovative leaders who can see the bigger picture.**

With the world of work changing rapidly, employers are looking for flexible, well-informed graduates who are sophisticated communicators and analytical thinkers.

This course equips you to address the key cultural, social and political issues facing the world today, leading you to new ways of approaching complex questions and developing creative solutions.

### WHAT YOU'LL LEARN

- A wide range of transferable skills such as communication, leadership and teamwork, problem-solving, negotiation, critical and creative thinking, and research.
- How to apply current research practices and specialised knowledge towards analysing complex real-world problems.
- How to think creatively to offer innovative solutions.

## CHOOSE YOUR STUDY AREA

### Communication

Critically analyse media industries and the links between politics, culture and communication.



### Film, television and screen studies

Study historical, textual and critical approaches to film and television, and related new screen technologies.



### Gender studies

Uncover gender biases and other discriminatory practices in this homegrown major with a dedicated focus on Asia.



### Global studies

Explore the global political, economic, social and cultural developments that continue to shape our world.



### Psychology

Understand human cognition and behaviour with this broad scientific discipline.



### MINOR

### Public relations

Master tactical communication skills to build strategic relationships and manage the reputation of organisations.



### MINOR

### Writing

Discover a range of contemporary writing, techniques and experiments.



## Bachelor of Digital Media and Communication

KPT/JPT (R3/0323/6/0039) 01/30 - MQA/SWA0104

**DURATION 3 YEARS**

**INTAKE FEBRUARY, JULY AND OCTOBER**

**FEES RM41,760**

Malaysian student

**RM48,480**

International student

2025 fees per year



**CLICK HERE  
FOR MORE  
COURSE DETAILS.**

**A degree for today's media world.**

This specialist course addresses the growing demand for graduates with new and diverse skills in communication, and a critical understanding of the internet and digital media.

### COURSE STRUCTURE

- Fundamentals in communication and media studies
- Digital media
- Professional practice.

### WHAT YOU'LL LEARN

- A range of media forms and the production, distribution and consumption of global and local media.
- New technologies and the impact of mediated communication
- Socioeconomic and sociocultural role and impact of the internet and digital media.
- Basics of image and video production and editing, website and social media design, and website analytics using industry-standard software.
- Workplace-relevant skills.

## Bachelor of Arts (Honours)

KPT/JPT (R3/220/6/0018) 12/26 - MQA/SWA0106

**DURATION 1 YEAR**

**INTAKE FEBRUARY**

**FEES RM41,760**

Malaysian student

**RM48,480**

International student

2025 fees per year



**CLICK HERE  
FOR MORE  
COURSE DETAILS.**

**This honours degree is a separate but complementary course to the arts undergraduate degree.**

This course is a perfect opportunity to explore and gain a deeper knowledge of a particular area of study that you're interested in. Under the guidance of an academic supervisor, you'll design and carry out a research project of your own choosing.

### AREAS OF STUDY

- Communication
- Global studies
- Gender studies
- Film, television and screen studies.

With the increasingly intersectional nature of these categories, there's truly no limit to the topics that you can work on as part of your dissertation.

### PROGRESSION TO FURTHER STUDIES

Successful completion of this course may provide a pathway to a master's by coursework (and if admitted you may be eligible for credit) or a graduate research degree.

## BUSINESS

### GLOBALLY RECOGNISED

Our degrees are backed by international accreditations such as The Association to Advance Collegiate Schools of Business (AACSB)<sup>1</sup> – held only by 6% of business schools worldwide – and leading professional bodies. We are also a signatory of the United Nations' Principles for Responsible Management Education (UN-PRME), committed to equipping you to champion sustainable development in your future organisation.

#### ACCREDITED BY

Association to Advance Collegiate Schools of Business



#### SIGNATORY OF

United Nations Principles for Responsible Management Education



**CLICK HERE TO VIEW  
THE COURSE GUIDE.**

[monash.edu.my/business](https://monash.edu.my/business)

<sup>1</sup> Bachelor of Business and Commerce only.

### EDUCATION OF THE FUTURE

Digital banking, Tik Tok ads, data analytics – technology has changed the way we invest money, do business and build brands. Future-proof yourself and expertly navigate the constant disruptions in the digital economy.

### DOUBLE DEGREES

Increase your future job prospects by combining your business studies with other areas of interest, including computer science or digital media and communications. A double degree in business is a great way to expand your employability.

### INDUSTRY FOCUSED

Develop a strong foundation with research-driven, industry-led knowledge and skills, delivered with the globally renowned Monash standard of academic rigour. Experience the corporate world through state-of-the-art facilities and strategic internships with top corporations.

RANKED

**NO.35** IN THE  
WORLD  
FOR ACCOUNTING AND  
FINANCE

RANKED

**NO.36** IN THE  
WORLD  
FOR ECONOMICS AND  
ECONOMETRICS

RANKED

**TOP 50** IN THE  
WORLD  
FOR MARKETING

RANKED

**NO.62** IN THE  
WORLD  
FOR BUSINESS AND  
MANAGEMENT STUDIES

QS World University Rankings by Subject 2024

“

If you love numbers as I do, you'll enjoy the challenges in accounting and financial management. Monash prepared me well for the corporate world, and the skills I've learnt have been highly applicable and essential to my current job. Monash has taught me so much and the University's motto *Ancora Imparo* continues to inspire my continuous learning spirit. I am still learning and will not stop learning.”

#### VISHAAN KUMAR KUMARASAMY

Audit Assistant Manager, Ernst & Young LLP Singapore  
Bachelor of Business and Commerce (Accounting and Finance)



# CHOOSE YOUR BUSINESS AREA

Our business degrees are comprehensive and flexible, offering you a range of options to help you develop the skills you'll need to have a successful business career.

With 13 areas of study to choose from, you will have genuine diversity and depth of choice to tailor your course to your interest and goals.



## Accountancy

Accountancy is the ability to systematically record, analyse and report financial transactions, and is essential to the success of any business. Learning the foundations of accounting will give you an evergreen edge that makes you a valuable member in any organisation.



## Applied economics

Economics considers how individuals, organisations and governments allocate resources to maximise the people's welfare. If you're interested in helping businesses make better decisions and examining the costs and benefits of the economic issues people face, this area is for you.



## Banking and financial management

Money matters. You'll study the driving factors behind how money is managed by individuals, families, businesses, non-profits and governments. This will help you gain a current perspective of financial markets, its players and the impact of money on our world's systems today.



## Business analytics

Make data work for you. Business analytics involves studying and interpreting data to make the best decisions, for you and your organisation. Having the tools to extract valuable information from data means you'll have unique insights to offer wherever you are.



## Business and commerce studies

Seeking a breadth of business knowledge? This area will give you a broad understanding of contemporary business challenges and build skills and competencies that meet the evolving business and social landscape.



## Digital marketing

The age we're living in is a marketer's dream. No longer limited by geographical or physical boundaries, marketing now means pushing the envelope and applying established marketing concepts and techniques within a digital framework. If you're interested in selling ideas and influencing trends, this area will provide a window into the stimulating world of marketing today.



## Econometrics and business statistics

Apply mathematics to work with data to solve problems and inform critical decision-making. This can explain how people make choices, how the choices of businesses and governments impact individuals, and the impact of economic policies.



## Financial technology (FinTech)

With a growing focus on fintech and startups, Monash is positioning itself at the forefront of innovation and emerging technologies through strategic partnerships with trailblazers such as Cradle, MDEC and Beyond4. In the ASEAN region alone, the digital economy is forecasted to add an estimated USD1 trillion to regional GDP by 2030<sup>1</sup>. This area will equip you to navigate the digital landscape.



## International business management

Get an introduction to the world of leadership and business beyond your shores: how international firms strategise, plan and execute policies and operations. Many businesses compete in international markets and knowing how to navigate the landscape can take you far.



## Management

Management revolves largely around business and human behaviour, exploring how people affect an organisation's goals and strategy outcomes. It's perfect for you if you're keen to dive into the ever-evolving relationship between business and people.



## Strategic marketing

The bedrock of marketing is value creation, which involves creating, communicating and delivering offerings of value for customers. This area studies an organisation's long-term activities to gain or maintain a competitive advantage, create continuous value for customers and balance shareholder expectations.



## Business law and taxation

In business, laws regulate financial transactions, taxation and marketing processes. These legal frameworks and structures protect organisations, groups and individuals that engage in business and partnerships. This minor introduces you to the legal landscape governing business in Malaysia and internationally.



## Sustainability and responsible management

This minor will equip you to consider the interaction between our society, the economy and our environment, and how responsible management can sustain all three into the future. You'll learn how to critically analyse business sustainability from the environmental, socio-economic and political perspectives.

MINOR

MINOR

## Bachelor of Business and Commerce

KPT/JPT (R3/0488/6/0042) 01/30 - MQA/SWA0108

**DURATION** 3 YEARS

**INTAKE** FEBRUARY, JULY  
AND OCTOBER

**FEES** RM42,720

Malaysian student

RM50,400

International student

2025 fees per year



**CLICK HERE  
FOR MORE  
COURSE DETAILS.**

### Chart your own course with different specialisations for different aptitudes.

Be it a tech start-up, a multinational corporation or a social enterprise, this course equips you with a solid business foundation to achieve the career of your dreams.

#### COURSE HIGHLIGHTS

- Enjoy the freedom of choosing from 11 different majors to chart a unique course that caters to your individuality and interests.
- Sharpen your entrepreneurship and leadership skills while developing marketing pitches for industry players.
- Develop intercultural skills and a global network of friends as you liaise with business students from other cultures or from Monash University Australia for group projects.

#### FIRST YEAR COURSE STRUCTURE

##### CORE UNITS

*Accountancy major*

- Financial accounting 1
- Management accounting 1
- Foundations of finance
- Business law
- Principles of economics<sup>1</sup>
- Introduction to statistical analysis
- Introduction to management.

*Non-Accountancy major*

- Accounting in business
- Foundations of finance
- Business law
- Introductory microeconomics
- Introduction to statistical analysis
- Introduction to management
- Marketing fundamentals.

##### CAPSTONE UNIT

**Complete one of the capstone units for non-Accountancy major.**

#### PROFESSIONAL RECOGNITIONS

If you've completed the required units, you'll qualify for exam exemptions from:

- Association of Chartered Certified Accountants (ACCA)
- Certified Practising Accountants (CPA) Australia
- Chartered Institute of Management Accountants (CIMA)
- Malaysian Institute of Certified Public Accountants (MICPA)
- Chartered Accountants Australia & New Zealand (CAANZ)
- Institute of Chartered Accountants in England and Wales (ICAEW)
- Asian Institute of Chartered Bankers (AICB).

Our curriculum is also aligned to the international professional industry standards of:

- The CFA Institute (Chartered Financial Analyst)
- CMT Association (Chartered Market Technician).

#### INDUSTRY EXPERIENCE

This degree offers an industry experience unit in the form of either a capstone or elective unit.

#### CAREER PATHS

You'll be prepared to work in:

- financial analysis
- human resources
- public relations
- digital marketing
- accountancy
- international trade
- administration
- advertising
- business analysis.

<sup>1</sup> If you're pursuing a double major in Accountancy and Applied Economics, you should complete Introductory microeconomics.

## Bachelor of Digital Business

KPT/JPT (N/0414/6/0234) 03/29 - MQA/PSA117488

**DURATION** 3 YEARS

**INTAKE** FEBRUARY AND JULY

**FEES** RM42,720

Malaysian student

RM50,400

International student

2025 fees per year



**CLICK HERE  
FOR MORE  
COURSE DETAILS.**

### Learn to lead businesses of the future.

This specialist degree prepares business leaders for digital transformation with a focus on digital technology applications in business management.

You'll gain practical, real-world experience with industry partners and learn how to use emerging technologies like artificial intelligence in ways that positively impact both business and society – all while developing prized knowledge and skills in cybersecurity and big data.

#### COURSE HIGHLIGHTS

- Expand your career options by adding a major or minor from the Bachelor of Business and Commerce.
- Take immersive electives to deepen your knowledge about implementing digitalisation tailored to specific business functions.
- Get hands-on experience with industry-specific datasets, software, workshops, live projects and more.
- Some units are jointly delivered online and you'll collaborate with your coursemates in Australia on projects in a truly global classroom.

#### CAREER PATHS

Emerge as a visionary business professional, with the digital skills to drive innovation across organisations in any industry. You could be a:

- digital marketing specialist
- business analyst
- e-commerce manager.



## Bachelor of Business and Commerce (Honours)

KPT/JPT (R2/340/6/0494) 03/25 - MQA/SWA0110

**DURATION** 1 YEAR

**INTAKE** JULY

**FEES** RM42,720

Malaysian student

RM50,400

International student

2025 fees per year



**CLICK HERE**  
FOR MORE  
COURSE DETAILS.

### Define your professional brand.

This course will develop you as a critical scholar and a specialist in your field of professional interest through rigorous research training.

Your research journey will enable you to carve a unique career identity and gain valuable insights from the mentorship of experienced academic researchers.

### SPECIALISATIONS

- Accountancy
- Applied economics
- Banking and financial management
- Business analytics
- Digital marketing
- Econometrics and business statistics
- Financial technology
- International business management
- Management
- Strategic marketing
- Sustainability and responsible management.

### PROGRESSION TO FURTHER STUDIES

Completing this course with first-class (upper) honours may fast-track you into the Monash Doctoral Program (PhD).

## Bachelor of Business and Commerce and Bachelor of Computer Science

KPT/JPT (R3/0488/6/0042) 01/30 - MQA/SWA0108 | KPT/JPT (R2/481/6/0556) 01/25 - MQA/SWA0123

**DURATION** 4 YEARS

**INTAKE** FEBRUARY, JULY  
AND OCTOBER

**FEES** RM45,600

Malaysian student

RM53,280

International student

2025 fees per year



**CLICK HERE**  
FOR MORE  
COURSE DETAILS.

### Data analytics and business intelligence are indispensable facets of modern businesses.

By building skills and competencies in business and computer science, you will gain all the benefits of each degree and be fully prepared to provide innovative solutions to ever-evolving business challenges.

### PROFESSIONAL RECOGNITION

The Bachelor of Computer Science is accredited by the Australian Computer Society.

### WHAT YOU'LL LEARN

#### Business and Commerce

- A broad foundation exposing you to several business disciplines
- A discipline of your choice to develop your expertise.

#### Computer Science

- Understanding of the role and theoretical basis of computer science and computational methods
- Ethical and professional guidelines
- In-depth knowledge of your specialised field
- Problem-solving and analytical skills
- Applied practice in a computer or data science project, or an industry-based learning placement.

### CAREER PATHS

You'll have a wide variety of career opportunities. You can be a:

- business development manager
- information systems designer
- machine learning engineers
- technical business analyst
- security architect
- business analyst
- computer engineer
- software engineer
- investment banking analyst.

## Bachelor of Business and Commerce and Bachelor of Digital Media and Communication

KPT/JPT (R3/340/6/0099) 10/28 - MQA/SWA0109

**DURATION** 4 YEARS

**INTAKE** FEBRUARY, JULY  
AND OCTOBER

**FEES** RM42,720

Malaysian student

RM50,400

International student

2025 fees per year



**CLICK HERE**  
FOR MORE  
COURSE DETAILS.

### Understand how digital media shapes society to communicate and make business decisions effectively.

You'll explore how new technologies in media can potentially forge social change, shape the future and elevate your business for success.

Specialising in two different fields will open up more career options as you pursue a career in either fields or in an entirely different industry with your joint expertise.

### WHAT YOU'LL LEARN

#### Business and Commerce

- A broad foundation exposing you to several business disciplines
- A discipline of your choice to develop your expertise.

#### Digital Media and Communication

- Firm grasp of digital communication practice and research
- Key concepts and developments in media studies
- Professional practice component.

### CAREER PATHS

Graduates can explore many roles in:

- financial analysis
- human resources
- digital marketing and advertising
- content writing
- accountancy
- international trade
- administration
- public relations
- corporate communications
- policy development
- research
- editing and writing.

## ENGINEERING

### INTERNATIONAL STANDARDS

Our engineering degrees are identical to those offered at the Clayton campus in Melbourne, and are accredited by Engineers Australia, Engineering Accreditation Council Malaysia<sup>1</sup>, and the Australian Computer Society<sup>2</sup>.

### FUTURE-FOCUSED

Gain expertise in emerging areas like renewable energy, nano-materials, biodegradable structures, solid-state lighting, and the design of low-carbon products and bio-mimic robots. You'll have access to some of the world's finest facilities, including the Smart Lab for Engineering Design and laboratories supporting cutting-edge engineering research.

### PASSPORT TO THE WORLD

Australia and Malaysia are signatories to the Washington Accord. When you graduate, you can work in any other signatory country without having to requalify.

### MORE TO LEARN

Employers want graduates who are highly skilled and well-rounded. Develop critical skills for success by participating in design competitions, leadership training programs, industry projects, and undergraduate research opportunities. You'll be known for your creative thinking, problem-solving and ability to excel in team-based environments.

<sup>1</sup> All undergraduate engineering degrees except the Bachelor of Software Engineering (Honours).

<sup>2</sup> Bachelor of Software Engineering (Honours) only.

**RANKED**  
**NO.33** **IN THE**  
**WORLD**  
FOR MATERIALS  
SCIENCES

**RANKED**  
**NO.34** **IN THE**  
**WORLD**  
FOR CIVIL AND  
STRUCTURAL ENGINEERING

**RANKED**  
**NO.43** **IN THE**  
**WORLD**  
FOR CHEMICAL  
ENGINEERING

**RANKED**  
**NO.63** **IN THE**  
**WORLD**  
FOR MECHANICAL  
ENGINEERING

**RANKED**  
**NO.78** **IN THE**  
**WORLD**  
FOR ELECTRICAL AND  
ELECTRONIC ENGINEERING

QS World University Rankings by Subject 2024

**RATED**  
**TIER 5 (EXCELLENT)**  
IN D-SETARA ENGINEERING BY  
THE MINISTRY OF EDUCATION MALAYSIA



The Undergraduate Research Opportunity Program introduced me to research early in my undergraduate years. I was able to contribute to a conference paper that was published during my final year, and this publication gave me the opportunity to present my work at an international conference in Melbourne. Following my graduation, I commenced my PhD in Geotechnical Engineering at Monash Australia."

#### DR ADHEESHA BANDARA

Bachelor of Civil Engineering (Honours)  
Doctor of Philosophy  
Senior Geotechnical Engineer, WSP Australia







**CLICK HERE TO VIEW  
THE COURSE GUIDE.**

[monash.edu.my/engineering](https://monash.edu.my/engineering)

## Bachelor of Engineering (Honours)

**DURATION 4 YEARS**

**INTAKE FEBRUARY, JULY  
AND OCTOBER**

**FEES RM53,280**

Malaysian student

**RM62,880**

International student

2025 fees per year



**CLICK HERE  
FOR MORE  
COURSE DETAILS.**

**Engineers are collaborative and creative problem-solvers who design technology and develop innovative solutions to make things work better.**

Their work is key to meeting the world's sustainable development goals, including advancing technologies for clean water, green energy, high-speed communications and transportation, advanced healthcare devices, reliable autonomous systems and safe, smart sustainable products, homes and cities, and more. As an engineer, you'll apply maths and science in a practical way, and work in teams to develop new technologies and improve existing ones.

### DEGREE AWARDED

Your degree will reflect your chosen specialisation:

- Bachelor of Chemical Engineering (Honours)
- Bachelor of Civil Engineering (Honours)
- Bachelor of Electrical and Computer Systems Engineering (Honours)
- Bachelor of Materials Engineering (Honours)
- Bachelor of Mechanical Engineering (Honours)
- Bachelor of Robotics and Mechatronics Engineering (Honours)
- Bachelor of Software Engineering (Honours)

### A COMMON FIRST YEAR

The Bachelor of Engineering (Honours) has a common first year, allowing you to experience a range of disciplines before deciding on a specialisation in your second year. It focuses on the role of the engineer in the future while developing your foundational skills for engineering.

### INDUSTRY EXPERIENCE

You'll go on a 12-week internship after your third year. This will help you to apply what you've learnt to real-life situations, work closely with industry professionals, and enhance the technical and professional skills that will give you an edge in the competitive employment market.

### DIVERSIFY YOUR SKILL SET

Complement your engineering specialisation with a minor and expand your career opportunities. You'll have the option of using your elective slots to complete an engineering minor in these exciting areas:

- Artificial intelligence in engineering
- Sensory system in industry 4.0
- Intelligent manufacturing
- Energy transition
- Electric vehicle technology
- Internet of Things
- Semiconductor
- Decarbonisation and net zero.

### FIRST YEAR COURSE STRUCTURE

#### CORE UNITS

- Engineering methods
- Engineering design
- Engineering smart systems
- Engineering numerical analysis
- Engineering mathematics

#### ELECTIVE UNITS

Select three units from:

- Foundation mathematics
- Chemistry 1 advanced
- Spatial communication in engineering
- Engineering Industry 4.0 design
- Discrete mathematics for computer science
- Physics for engineering
- Digital systems
- Mechanics of fluids
- Introduction to systems engineering
- Manufacturing processes
- Introduction to computer science for engineers
- Introduction to software engineering
- Leadership in sustainable development.

## GRADUATE WORK-READY

Whether you want to unlock your leadership potential or start thinking like an entrepreneur, you'll have access to programs that leave you prepared for leadership, success and—most importantly—life.

You'll have the opportunity to engage in a wide range of student-led extracurricular activities to further develop your leadership, teamwork, management and organisation skills. These include:

- Student Leadership Network, a one-year program where you'll engage with industry professionals through workshops, industry site visits, networking evenings, and a student-organised leadership summit
- student chapters of professional bodies such as Engineers Australia and Institute of Engineers Malaysia
- external engineering design competitions to hone your skills and gain real-world exposure, most notably Formula SAE and National Chem-E-Car Malaysia
- social initiatives with Engineers Without Borders and Robogals.



# CHOOSE YOUR ENGINEERING SPECIALISATION

## Chemical Engineering

**Many everyday items from electronic devices to food and beverages, petrol and pharmaceuticals involve chemical engineering.**

As a chemical engineer, you'll develop and improve processes that convert raw materials into useful products. You'll also create and optimise processes that are environmentally sustainable, reducing waste, energy consumption and emissions.



**CLICK HERE  
FOR MORE  
COURSE DETAILS.**

### DEGREE AWARDED

Bachelor of Chemical Engineering (Honours)  
KPT/JPT (R2/524/6/0045) 03/27 - MQA/FA4650

### THE MONASH DIFFERENCE

- Monash is the first in Malaysia and Australia to introduce fourth industrial revolution concepts and practices in the undergraduate curriculum for chemical engineering.
- Address global challenges with a degree that responds to changing food, energy, environment and water needs.
- Enhance your employability with hands-on experience at Monash's pilot plant facility.
- Practical work is an integral part of this course. You'll develop critical skills in problem-solving, critical thinking, and project management.

### CAREER PATHS

- Environmental protection and recycling
- Food and beverage
- Fuel
- Oil and gas
- Oleochemicals
- Pharmaceuticals
- Polymer and plastics
- Renewable energy
- Semiconductors
- Toiletries and cosmetics
- Water treatment.

## Civil Engineering

**We rely on civil engineers to construct and maintain the infrastructure of modern society.**

Civil engineers design and build transportation systems, construct commercial and industrial complexes, and create water supply and pollution control structures – all while ensuring the sustainability of the environment around us.



**CLICK HERE  
FOR MORE  
COURSE DETAILS.**

### DEGREE AWARDED

Bachelor of Civil Engineering (Honours)  
KPT/JPT (R/520/6/0039) 01/28 - MQA/FA8848

### THE MONASH DIFFERENCE

- Focus on the fundamentals and a taste of industry experience through opportunities in the major fields.
- Delve into industry-driven and research-oriented projects.
- Advance society with knowledge of sustainable design and construction of infrastructures.

### CAREER PATHS

- Government infrastructure projects
- Water and wastewater industries
- Construction and mining
- Roads and traffic industries
- Marine and resort developments
- Property and land development
- Consulting firms.

## Electrical and Computer Systems Engineering

**Electrical and computer systems engineering is an extremely diverse field, encompassing semiconductor, Internet of Things (IoT), computer systems, artificial intelligence, robotics, electronics, telecommunications and electrical power.**

You'll develop next-generation technologies and smart cutting-edge solutions for various industries.

At Monash, you're not limited to your core subjects. You can broaden your skill set in other exciting complementary areas such as programming, artificial intelligence and machine learning.



**CLICK HERE  
FOR MORE  
COURSE DETAILS.**

### DEGREE AWARDED

Bachelor of Electrical and Computer Systems Engineering (Honours)  
KPT/JPT (R3/523/6/0081) 04/29 - MQA/FA7521

### THE MONASH DIFFERENCE

- A multifaceted electrical engineering degree unlike any other in Malaysia.
- Learn in four specialised labs supporting projects and world-class research in semiconductors, deep learning, IoT, intelligent lighting, and micro and nano devices.
- Get a headstart in your engineering career through our extensive collaboration with industry.
- Enhance your skills and stretch your limits with external design competitions.

### CAREER PATHS

- Semiconductor technology
- Power generation
- Industrial and power electronics
- Automation
- Computer systems
- Robotics
- Healthcare
- Telecommunications
- Software engineering
- Technology consultancy
- Artificial intelligence.

## Materials Engineering

**Materials engineering is all about making things stronger, lighter and more functional, yet sustainable and cost-effective.**

It underpins much of engineering – if we want to make things, we need to have materials with the right properties. Whether it's a lighter and stronger jet engine or a biodegradable tissue scaffold to grow organs from stem cells, materials are crucial to all aspects of engineering.

This is a four-year degree where you'll study your first two years in Malaysia and your final years at our Clayton campus in Melbourne, Australia.



**CLICK HERE  
FOR MORE  
COURSE DETAILS.**

### DEGREE AWARDED

Bachelor of Materials Engineering (Honours)<sup>1</sup>  
KPT/JPT (N10714/610028) 02/31 - MQA/PSA 17375

### THE MONASH DIFFERENCE

- Begin your studies in Malaysia and graduate in Australia. Immerse yourself in two cultures and academic environments while studying a degree of the highest education quality.
- Monash is one of only a few universities in Malaysia offering a degree in materials engineering.
- With elements of physics, mathematics, biology and chemistry, this course provides a varied and stimulating experience to help you make a real difference in industry and research.

### CAREER PATHS

- Aerospace
- Biomedical
- Mining
- Manufacturing
- Processing
- Semiconductor and recycling
- Quality control
- Metallurgy.

<sup>1</sup> The Bachelor of Materials Engineering (Honours) will only be accredited by Engineers Australia upon completion at Monash University, Australia.



## Mechanical Engineering

**Mechanical engineering is about the efficient use of energy and force in the design and function of all types of mechanisms, from the simplest to the most complex.**

Growth industries include advanced manufacturing, motor vehicles, smart buildings, renewable energy and biomedical engineering.

You could manufacture new vehicles, design wind turbines for the developing world, or work with the medical profession to create robots that can operate with greater precision than a human.



**CLICK HERE  
FOR MORE  
COURSE DETAILS.**

### DEGREE AWARDED

Bachelor of Mechanical Engineering (Honours)  
KPT/JPT (R2/521/6/0099) 03/27 - MQA/FA7520

### THE MONASH DIFFERENCE

- Participate in external design competitions for a greater learning experience.
- Choose from a variety of elective units that are aligned with current industry needs, such as reliability engineering, non-destructive testing, electric vehicle technology, AI in manufacturing, biomedical engineering and healthcare systems.
- Learn modern software hands-on through engineering design and build projects
- Get a head-start with industry-based final-year projects.
- Challenge yourself with master-level elective units in the area of applied engineering, including energy and sustainability.

### CAREER PATHS

- Mechanical and electrical consultancy
- Research and development
- Automotive industry
- Sustainable technologies
- Intelligent manufacturing
- Biomedical engineering
- Project management
- Renewable energy and power plant operations.

## Robotics and Mechatronics Engineering

**Robotics and mechatronics is the dynamic field where autonomous and intelligent systems are designed and brought to life, drawing on the synergistic integration of mechanical, electrical, and computing disciplines.**

You'll explore cutting-edge technologies such as machine vision, advanced artificial intelligence, and modern manufacturing practices, enabling you to develop smart, innovative devices from autonomous vehicles navigating complex environments to miniature robots transforming medical procedures.

You'll be at the forefront of the future of intelligent systems and next-generation automation.



**CLICK HERE  
FOR MORE  
COURSE DETAILS.**

### DEGREE AWARDED

Bachelor of Robotics and Mechatronics Engineering (Honours)  
KPT/JPT (R2/523/6/0230) 03/27 - MQA/FA7519

### THE MONASH DIFFERENCE

- Designed in response to the fast-paced and growing needs of the industry and our lifestyle.
- Extensive collaboration with industry which gives you a headstart in your career.
- Offers a choice of specialisation in automation or artificial intelligence that'll prepare you with essential knowledge and skills to bring your future organisation to the next level of productivity.
- External design competitions that enhance your skills and stretch your limits.

### CAREER PATHS

- Nanotechnology
- Robotics
- Bio-engineering
- Smart manufacturing
- Automation
- Automotive industry
- Deep analytics
- Artificial intelligence.

## Software Engineering

**Software engineering is a field that's constantly evolving as new technologies emerge.**

Your skills will be critical across many functions – from dispensing life-saving medicine to controlling flight paths.

You could design tailored systems and applications, and build the systems that run the technology and control networks. Solve business challenges by delivering technical solutions, and improve your organisation's current systems.



**CLICK HERE  
FOR MORE  
COURSE DETAILS.**

### DEGREE AWARDED

Bachelor of Software Engineering (Honours)  
KPT/JPT (R/481/6/0709) 11/25 - MQA/SA13363

### THE MONASH DIFFERENCE

- Accredited by the Australian Computer Society.
- The only software engineering program accredited by Engineers Australia.
- Practice-based learning through internships and collaborative studio-based learning will give you strong skills in teamwork, project management and communication.
- Apply for the School of IT's Industry Based Learning program to complete a half-year placement with leading Malaysian and global organisations. The placement counts towards your course and is supported by a scholarship.

### CAREER PATHS

- Applications developer
- Internet developer
- Programming specialist
- Systems programmer
- Software designer
- Software engineer
- Architect
- Consultant
- Developer.

## INFORMATION TECHNOLOGY

### COMPREHENSIVE AND FLEXIBLE

Gain a thorough understanding in the key areas of computing and IT and pursue your interests with popular computing subjects such as artificial intelligence, data analytics, business intelligence, cybersecurity and more.

### PROFESSIONALLY RECOGNISED

Our IT courses are accredited by the Australian Computer Society (ACS) and globally recognised through the international Seoul Accord.

### FACILITIES

Learn in teaching labs equipped with the latest technology to support studies in generative AI, data science and high performance computing. Or find inspiration at the Cyber-Physical AI Lab, dedicated to showcasing ongoing research like AI for medical imaging and music, large language models, computational vision and hidden emotions recognition.

### INDUSTRY EXPERIENCE

We give you plenty of opportunities to gain valuable practical experience, securing your employability in the job market. Our undergraduate courses provide:

- Industry-based Learning (IBL), where you'll be placed in a leading IT organisation for an internship during the semester and supported by a scholarship from the host organisation, or
- a 12-week internship in an industry-based environment.

Participate in the Student Leaders Network (SLN), a one-year program that offers you the opportunity to engage with industry professionals through workshops, industry site visits, networking evenings, and a student-organised leadership summit.

You'll also have access to career talks and panel discussions with industry guests, industry competitions, as well as professional certification programs.

RANKED

**NO.34** IN THE  
WORLD  
FOR DATA SCIENCE AND  
ARTIFICIAL INTELLIGENCE

RANKED

**NO.68** IN THE  
WORLD  
FOR COMPUTER SCIENCE AND  
INFORMATION SYSTEMS

QS World University Rankings by Subject 2024

RANKED

**NO.52** IN THE  
WORLD  
FOR COMPUTER SCIENCE

Times Higher Education World University Rankings  
by Subject 2024



My studies at Monash Malaysia provided me with a solid foundation in computer science and equipped me with essential skills and knowledge relevant to the working world. The rigorous curriculum, combined with opportunities for practical application and research projects, prepared me to tackle real-world challenges in the field of AI and data science."

#### NIKIN GEETHILA MATHARAARACHCHI

Bachelor of Computer Science  
Bachelor of Computer Science (Honours)  
Founder and CEO, Synapse AI Labs

Nikin's goal is to drive innovation in the field of artificial intelligence and data science, with a focus on creating impactful solutions. As the founder of Synapse AI Labs, he spearheads the development of their flagship product, Kommon Poll, which leverages advanced machine learning techniques to analyse keyword performance across various online media platforms.

He is currently pursuing his PhD in Artificial Intelligence with Monash.







**CLICK HERE TO VIEW  
THE COURSE GUIDE.**

[monash.edu.my/it](https://monash.edu.my/it)

## Bachelor of Computer Science

KPT/JPT (R3/0613/6/0089) 01/30 - MQA/SWA0123

**DURATION 3 YEARS**

**INTAKE FEBRUARY, JULY  
AND OCTOBER**

**FEES RM45,600**

Malaysian student

**RM53,280**

International student

2025 fees per year



**CLICK HERE  
FOR MORE  
COURSE DETAILS.**

**Computer scientists drive everything, from search engines and smart watches to cybersecurity and autonomous drones.**

This is a degree that could take you anywhere. Flexible and practical, this course will teach you how to think creatively and analytically in equal measure.

You'll also graduate with the skills needed to design algorithms and data structures – creating software that will benefit people around the world.

### AREAS OF STUDY

- Algorithms and data structures
- Deep learning
- Data analytics
- Entrepreneurship
- Cybersecurity
- Computer networking
- Artificial intelligence
- Malicious AI and dark side security
- Mobile application development.

### CAREER PATHS

- Specialist programmer
- Systems analyst
- Research scientist
- IT manager
- Application developer
- Cybersecurity analyst
- Forensic computer analyst
- Game designer
- Machine learning engineer
- UX designer
- Web developer.

## Bachelor of Computer Science in Data Science

KPT/JPT (R/0613/6/0076) 09/29 - MQA/FA12435

**DURATION 3 YEARS**

**INTAKE FEBRUARY, JULY  
AND OCTOBER**

**FEES RM45,600**

Malaysian student

**RM53,280**

International student

2025 fees per year



**CLICK HERE  
FOR MORE  
COURSE DETAILS.**

**This is the era of big data and artificial intelligence.**

Data science represents a cutting-edge discipline which applies scientific methods, mathematics, algorithms and artificial intelligence to extract and visualise intelligent insights from huge volumes of data.

If you aspire to solve real-world problems based on the information challenges of big data, then specialising in data science will equip you with the practical skills to excel in your chosen career.

### AREAS OF STUDY

- Mathematical statistics
- Principles of data science
- Modelling for data science
- Business intelligence and data warehousing
- Data analytics and visualisation
- Big data management and processing
- Deep learning and artificial intelligence
- Malicious AI and dark side security.

### CAREER PATHS

- Business intelligence analyst
- Chief data officer
- Data analyst
- Data architect
- Data mining engineer
- Data scientist
- Quantitative analyst
- Quantitative researcher
- Machine learning engineer
- Statistician
- Data modeller
- Marketing analyst
- Big data developer
- Analytics manager
- Database administrator.

## Bachelor of Computer Science (Honours)

KPT/JPT (R/481/6/0783) 10/27 - MQA/SWA12120

**DURATION 1 YEAR**

**INTAKE FEBRUARY AND JULY**

**FEES RM45,120**

Malaysian student

**RM52,800**

International student

2025 fees per year



**CLICK HERE  
FOR MORE  
COURSE DETAILS.**

**Discover the world of digital research and development.**

This honours version of the Bachelor of Computer Science is for high achieving students with a research focus. You'll undertake an independent research project on your selected topic, working closely with a supervisor who'll provide you with individual guidance and academic counselling.

### PROGRESSION TO FURTHER STUDIES

Doctor of Philosophy (PhD).

### CAREER PATHS

- Machine learning engineer
- AI engineer
- Consultant
- Cybersecurity specialist
- Data scientist
- Research scientist
- Computer vision engineer
- Digital health consultant.

# MEDICINE AND HEALTH SCIENCES

## PROFESSIONAL RECOGNITIONS

The Bachelor of Medical Science and Doctor of Medicine is accredited by the Australian Medical Council, which means you can practise in Australia and New Zealand without sitting for additional examinations. Our psychology degrees are recognised by the Australian Psychology Accreditation Council.

## RESEARCH EXCELLENCE

Our advanced research labs are spearheading multidisciplinary research in diabetes, molecular medicine, toxicology and oncology. Be inspired to ask questions that will impact world health.

## TEACHING AND LEARNING FACILITIES

We use the latest educational technologies in specialised labs and learning suites to enhance the teaching and learning process. You'll also study with students from other areas of health, which will prepare you to work across professions in your future career.

## CLINICAL EXPOSURE

Our medical students go on clinical placements at healthcare facilities in Malaysia and a three-month clinical attachment in Australia. These opportunities let you gain wider experience in a variety of healthcare settings.

**RANKED**  
**NO.29** IN THE  
WORLD  
FOR CLINICAL AND HEALTH

Times Higher Education World University Rankings  
by Subject 2024

**RANKED**  
**NO.17** IN THE  
WORLD  
FOR ANATOMY AND PHYSIOLOGY

**RANKED**  
**NO.40** IN THE  
WORLD  
FOR MEDICINE

**RANKED**  
**NO.52** IN THE  
WORLD  
FOR PSYCHOLOGY

QS World University Rankings by Subject 2024

“

From the third year of my studies, my clinical years effectively functioned as work placements. Particularly in the fifth year, we were immersed in hospital settings full-time, learning to perform essential intern duties. These experiences honed my practical skills and deepened my understanding of medical practice beyond textbook knowledge.

Additionally, I briefly worked as a Personal Care Assistant in an aged care facility during my placement in Australia. I gained valuable insights into elderly patient care and developed a deep respect for those in nursing and personal care professions.”

### LEHASHENEE THIRUKUMAR

Bachelor of Medical Science and Doctor of Medicine  
Sophie Davis Memorial Prize  
Khalid Kadir Award  
Hospital Medical Officer Year 1 (Intern), Albury Wodonga Health







**CLICK HERE TO VIEW  
THE COURSE GUIDE.**

[monash.edu.my/jcsmhs](https://monash.edu.my/jcsmhs)

## Bachelor of Medical Science and Doctor of Medicine

KPT/JPT (R3/0912/6/0003) 06/32 - MQA/FA5833

**DURATION 5 YEARS**

**INTAKE FEBRUARY**

**FEES RM114,240**

Malaysian student

**RM134,880**

International student

2025 fees per year



**CLICK HERE  
FOR MORE  
COURSE DETAILS.**

**Commence your medical studies from day one and be equipped with the knowledge, skills and attributes to begin your career as a medical practitioner.**

This course draws on Monash's world-leading expertise in medical practice and research, and our school's particular strengths in the cardiometabolic field, infection and immunity, global public health and neuroscience. Many of our graduates have gone on to practise in Australia.

### PROFESSIONAL ACCREDITATIONS

- Malaysian Medical Council
- Australian Medical Council
- Sri Lanka Medical Council.

### AREAS OF STUDY

- Cardiovascular system
- Communication skills
- Determinants of health
- Ethics and law
- Gastrointestinal system
- Genomics
- Geriatrics
- Health systems and health economics
- Human development and growth
- Human behaviour
- Immunology
- Infectious disease
- Molecules, cells and tissues
- Musculoskeletal system
- Neurosciences
- Nutrition
- Patient safety
- Professionalism
- Public health and population health
- Quality assurance
- Reflective practice
- Renal and endocrine systems
- Reproduction
- Research and statistics
- Respiratory system
- Teamwork and leadership.

### WHAT TO EXPECT

- A highly integrated medical course with the objective of developing skills in critical thinking, self-directed learning, reflection and professionalism
- Early clinical exposure through a variety of medical contact visits to medical practices, community care facilities and hospitals
- Clinical experience in highly regarded centres of medical care and expertise
- Innovative teaching sessions with a range of learning modes: lectures, seminars, workshops, tutorials and simulation sessions delivered by our expert faculty, clinicians and researchers
- Simulations and clinical skills workshops provide practical hands-on simulation experiences of authentic scenarios from clinical practice, invaluable in preparing you for your role as an intern.

### THEMES AND STRUCTURES

- Personal and professional development
- Population, society, health and illness
- Foundations of medicine
- Clinical skills.

### WHERE YOU'LL BE

#### YEAR 1

##### Sunway City campus

You'll start with the basic medical and behavioural sciences within interdisciplinary units, with a major focus on clinical issues through problem-based cases and visits to clinical sites.



#### YEAR 2

##### Sunway City campus

You'll continue to learn the basic medical and behavioural sciences, while participating in community placements and working with clients of welfare agencies. You'll also spend time in the hospital and clinics at Segamat.



#### YEAR 3

##### Clinical School Johor Bahru

You'll study integrated medicine and surgery, which will be taught using a series of problem-based learning and bedside teaching sessions in clinical settings.



#### YEAR 4

##### Clinical School Johor Bahru and Sultanah Aminah Hospital

You'll engage with core clinical rotations in women's and children's health, general practice, and psychological medicine.



#### YEAR 5

##### Clinical School Johor Bahru, Sultanah Aminah Hospital, and in Australia

Your final year is structured as a series of pre-intern placements, where you'll complete your degree by gaining wider experience in important disciplines and specific areas of interest through a range of urban, rural and overseas settings.

### YOUR INTERVIEW

We're not just looking for students with the highest test scores. We're also looking for students with qualities essential for a successful medical career like critical thinking, empathy, ethical reasoning and motivation. For that, Monash uses the Multiple Mini Interview format to assess your potential. The process involves four sequential interviews taking about 10 minutes each.

[monash.edu.my/mmi](https://monash.edu.my/mmi)

### FURTHER STUDIES

After completing this course, you can opt to study an extra year for the Bachelor of Medical Science (Honours). Learn more on page 34.

## Bachelor of Medical Science (Honours)

KPT/JPT (R2/721/6/0002) 11/25 - MQA/SWA0160

**DURATION** 1 YEAR  
**INTAKE** FEBRUARY, JULY  
AND NOVEMBER

**FEES** RM48,960  
Malaysian student  
RM58,080  
International student  
2025 fees per year



**CLICK HERE**  
FOR MORE  
COURSE DETAILS.

### Gain an appreciation of the way in which research informs the practice of medicine.

This course offers an in-depth understanding of research in areas such as biomedical science, public health, clinical medicine and medical education.

You'll be embedded in a research setting with renowned researchers, and exposed to technologies and research methodologies from a range of clinical and laboratory settings.

There are many advantages in opting for this additional year. Graduates have felt their knowledge increased exponentially and their ability to practice evidence-based medicine improved.

### CAREER PATHS

In the increasingly competitive clinical fellowship and graduate scenario, the degree will be an advantage in obtaining training and scholarship positions. This can be a pathway to research degrees such as a master's or PhD.

## Bachelor of Human Nutrition

KPT/JPT (N/726/6/0096) 4/27 - MQA/PSA 15176

**DURATION** 3 YEARS  
**INTAKE** FEBRUARY AND JULY  
**FEES** RM49,920

Malaysian student  
RM58,560  
International student  
2025 fees per year



**CLICK HERE**  
FOR MORE  
COURSE DETAILS.

### Turn your interest in healthy eating into a professional career.

This comprehensive course will train you to become a work-ready and competent nutritionist with the competencies to help the public achieve their optimum health, lifestyle, and wellbeing through evidence-based nutritional guidelines.

#### COURSE STRUCTURE

- Foundation of medical, food and nutritional sciences
- Nutrition and health
- Nutrition professional and skills development
- Research and practice in nutrition.

### INTERNSHIP

You'll go for internships at selected placement sites where you'll gain working-integrated training experience. This includes various healthcare settings and organisations that provide healthcare services such as community clinics and hospitals, food industries, sports, fitness and wellness centres, and more.

### CAREER PATHS

- Nutrition consultant in clinics and hospitals
- Nutrition advisor in the sports, fitness and wellness sectors
- Nutrition consultant for the food, digital health and media sectors
- Functional foods and natural products researcher
- Scientific and regulatory affairs consultant
- Healthy foods entrepreneur
- Nutrition research scientist or academic.

## Bachelor of Psychology

KPT/JPT (R/311/6/0068) 05/25 - MQA/SWA11799

**DURATION** 3 YEARS  
**INTAKE** FEBRUARY, JULY  
AND OCTOBER

**FEES** RM41,760  
Malaysian student  
RM48,480  
International student  
2025 fees per year



**CLICK HERE**  
FOR MORE  
COURSE DETAILS.

### For those with a passion for understanding and helping people.

If you want to study psychology and understand the complexities of human behaviour and the biological, psychological and social factors that contribute to individual, group and community processes, this course is for you.

You'll learn how to make your own scientific discoveries, promote mental health, and influence how those in the community think about mental health.

### WHAT YOU'LL LEARN

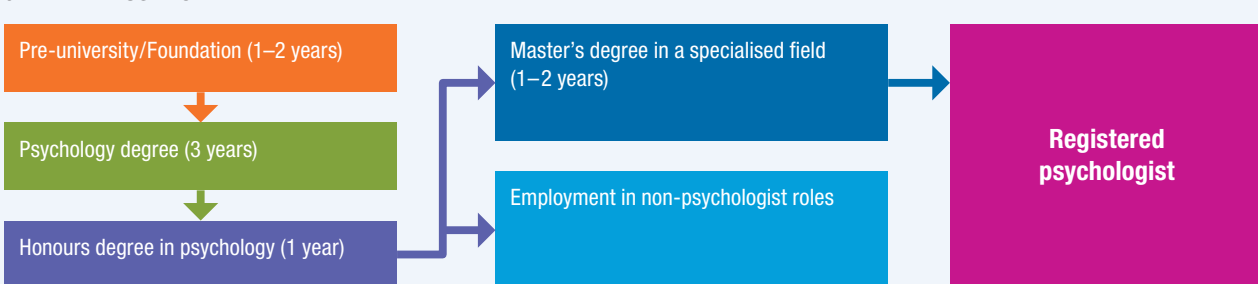
- **Psychology sequence**  
Core areas of psychology, including the theoretical and empirical basis of our current understanding of human psychology, brain function and evidence-based approaches to psychological intervention.
- **Psychology in practice and society**  
Choose one of two streams:  
– Mental health and wellbeing  
– Applied psychology.
- **Elective units.**

### CAREER PATHS

You can have a career in a diverse range of fields, including:

- research
- clinical psychology
- human resources
- community services and counselling
- education
- health services.

### GENERAL EDUCATION PATHWAY





## Bachelor of Psychology and Business

KPT/JPT (R3/3111/6/0008) 12/26 - MQA/SWA0125

**DURATION** 3 YEARS  
**INTAKE** FEBRUARY, JULY  
AND OCTOBER

**FEES** RM42,720  
Malaysian student  
RM50,400  
International student  
2025 fees per year



**CLICK HERE**  
FOR MORE  
COURSE DETAILS.

### If you want to apply your psychological training in a business environment, this course is for you.

You'll gain a fundamental understanding of the major principles of psychology and acquire a basic knowledge of core business disciplines and specialised knowledge in one business area of your choosing. This will help you develop an understanding of psychology in a business environment.

#### AREAS OF STUDY

- Psychology
- Plus one of the following majors:
  - Business analytics
  - Business and commerce studies
  - Digital marketing
  - Finance technology (FinTech)
  - Econometrics and business statistics
  - International business management
  - Management
  - Strategic marketing.

#### WHAT YOU'LL LEARN

- Psychology and business fundamentals and foundational skills
- Research methods and critical thinking skills
- A Psychology in business practice component where you'll develop further skills and knowledge in psychology together with advanced understanding of your chosen area of business practice.

#### CAREER PATHS

A wide range of careers are available to you, including:

- organisational psychologist
- human resources manager
- industrial relations consultant
- market researcher
- public policy adviser
- training and development coordinator
- international business manager.

## Bachelor of Psychology (Honours)

KPT/JPT (R2/311/6/0067) 10/25 - MQA/SWA0131

**DURATION** 1 YEAR  
**INTAKE** FEBRUARY  
**FEES** RM42,720

Malaysian student  
RM49,920  
International student  
2025 fees per year



**CLICK HERE**  
FOR MORE  
COURSE DETAILS.

### Extend your studies for an extra year after completing your bachelor's degree to broaden your understanding of psychology.

This course aims to increase your understanding of theoretical and methodological aspects of research, to develop your analytic, research and communication skills, and to provide you with advanced knowledge in specific areas of the science and practice of psychology.

You'll complete coursework components and undertake a supervised research project that will train you in discipline-specific and generic research skills.

#### PROGRESSION TO FURTHER STUDIES

Doctor of Philosophy (PhD), Doctor of Philosophy (Clinical Psychology), or Master in Psychology.

#### CAREER PATHS

You'll be well prepared to undertake further studies towards clinical practice or research.



Through Monash's challenging academic programs, hands-on research experiences, and global exposure, I have developed crucial skills such as critical thinking, problem-solving, and adaptability. Beyond academics, the university's focus on cultural inclusivity, research integrity, and professional development has also further equipped me with the confidence and tools to thrive in any workplace setting."

#### ESTHER ONG ZHEN MEI

Bachelor of Psychological Science  
Bachelor of Psychological Science (Honours)  
Research Assistant, Monash University Malaysia

# PHARMACY

## INTERNATIONAL STANDARDS

Our courses use the same robust, current and evolving curriculum offered at Monash Australia. Our pharmacy degree will prepare you to be a medicines expert and work on the frontline of modern patient care. Our pharmaceutical science programs provide expertise in the drug discovery pipeline, preparing you for a career in drug discovery, development and allied industries.

## TEACHING AND LEARNING

We are at the forefront of a revolution in university teaching. Your studies emphasise critical thinking and analysis and are supported by innovative and intelligent use of learning technology. You'll have extensive lab time and expert training on industry-standard instrumentation.

## STUDY ABROAD

Apply for a semester exchange or transfer to Parkville, Monash's specialist pharmacy and pharmaceutical sciences campus located in the heart of Australia's top health and biomedical precinct.

## PRACTICAL EXPERIENCE

You'll go on experiential placements where you'll integrate classroom learning with real-world experience and develop your professional skills. Pharmacy students undertake industry placements from early in their course, while pharmaceutical science students have the opportunity to undertake a research project or industry placement.

**RANKED**  
**NO.2** IN THE  
WORLD  
FOR PHARMACY AND  
PHARMACOLOGY

QS World University Rankings by Subject 2024



**CLICK HERE** TO VIEW  
THE COURSE GUIDE.

[monash.edu.my/pharmacy](https://monash.edu.my/pharmacy)



During my journey as a pharmacist, I had the opportunity to undertake several work placements spanning hospitals, community health centers, and pharmacies. These experiences offered me a glimpse into the diverse career paths available upon graduation, and they proved especially invaluable during my Provisionally Registered Pharmacist year, a period known for its demanding nature. These placements not only honed my technical skills but also mentally prepared me for the challenges ahead."

### ELIZABETH CHONG YIE-CHUEN

Bachelor of Pharmacy  
Regional Migration Health Consultant, International Organization of Migration

With the International Organization for Migration in Thailand, Elizabeth plays a crucial part in supporting 40 missions across the Asia Pacific region. She focuses on critical areas such as tuberculosis (TB) elimination, with a particular emphasis on TB eradication initiatives. She is also examining existing migrant health insurance schemes to bolster understanding and capacity across the region.





## Bachelor of Pharmacy (Honours)

KPT/JPT (R2/727/6/0061) 03/27 - MQA/FA11712

**DURATION** 4 YEARS

**INTAKE** FEBRUARY

**FEES** RM58,560

Malaysian student

RM69,120

International student

2025 fees per year



**CLICK HERE  
FOR MORE  
COURSE DETAILS.**

**As experts in medicine, pharmacists play a vital role.**

Not only do pharmacists help patients understand and use medication, they are also involved in drug development and innovation.

This course covers the applied pharmaceutical sciences, enabling sciences, clinical and therapeutic sciences, and pharmacy practice.

You'll have the professional skills, experience and expertise to make a difference for people in hospitals, aged-care facilities and local communities.

### PROFESSIONAL RECOGNITIONS

This course is accredited by:

- Pharmacy Board of Malaysia
- Australian Pharmacy Council.

### WHAT YOU'LL LEARN

- Structure and function of the body (How the body works)
- Drug structure, disposition, and action (How medicines work)
- Professional practice (What pharmacists do)
- Comprehensive care
- Inquiry and innovation
- Professional experience

### GENERAL EDUCATION PATHWAY

Pre-university/Foundation (1–2 years)

Pharmacy degree (4 years)

Pharmacist training (1 year)

Compulsory service (1 year)

Your career begins

### CAREER PATHS

Graduates will be able to find employment in the following sectors:

- community pharmacy
- hospital pharmacy
- government (regulatory affairs)
- pharmaceutical industry
- armed services
- education and research.

## Bachelor of Pharmaceutical Science

KPT/JPT (N/0916/6/0003) 02/28 - MQA/PSA16429

**DURATION** 3 YEARS

**INTAKE** FEBRUARY

**FEES** RM49,920

Malaysian student

RM58,560

International student

2025 fees per year



**CLICK HERE  
FOR MORE  
COURSE DETAILS.**

**This is a hands-on degree that covers the chemistry, biology and technology of medicines and other chemical formulations.**

You'll be equipped to improve human health and well-being by researching and developing more reliable, accessible and effective treatments and products.

The knowledge and practical skills critical to the discovery and development of new drugs and therapies will lead you to exciting careers in research and industry.

### AREAS OF STUDY

- Drug discovery biology
- Medicinal chemistry
- Formulation science

### PROFESSIONAL RECOGNITION

Pass all chemistry units in this course, including electives BPS3041 Synthetic chemistry 2: Advanced methods and BPS3042 Advanced experimental spectroscopy, and you will be eligible to apply for membership with the Institut Kimia Malaysia upon graduation and become a registered chemist.

### WHAT YOU'LL LEARN

- Foundation science studies in bioorganic and medicinal chemistry, physical chemistry and physiology
- Practical and theoretical skills and knowledge of your chosen specialisation
- A major research project or an industry placement.

### CAREER PATHS

Pharmaceutical science graduates commonly become specialists or scientists in:

- the pharmaceutical industry
- pharmacology
- bioassay development
- cosmeceuticals
- drug product development
- formulation
- medicinal chemistry
- nutraceuticals
- pharmacovigilance
- quality control
- regulatory affairs.

## Bachelor of Pharmaceutical Science (Honours)

KPT/JPT (N/0916/6/0011) 12/28 - MQA/PSA 17107

**DURATION** 1 YEAR

**INTAKE** FEBRUARY

**FEES** RM48,000

Malaysian student

RM56,160

International student

2025 fees per year



**CLICK HERE  
FOR MORE  
COURSE DETAILS.**

**Equip yourself for a career in research.**

An honours year offers an optimal blend of pharmaceutical science knowledge and skills with research experience in your chosen area of research.

You'll be able to select coursework modules that inspire you and customise your study towards a specific research topic of interest, which will help prepare you for your original research under the guidance of a leading academic expert in the field.

### AREAS OF STUDY

- Drug discovery biology
- Formulation science
- Medicinal chemistry
- Medicine use and safety.

### PROGRESSION TO FURTHER STUDIES

Doctor of Philosophy (PhD).

### CAREER PATHS

Employment options outside academia include careers as a specialist or scientist in:

- analytical development
- bioassay development
- cosmeceuticals
- drug product development
- formulation
- manufacturing
- medicinal chemistry
- pharmaceutical chemistry
- nutraceuticals
- pharmacovigilance.

## SCIENCE

### GLOBALLY RELEVANT

Our courses have a strong regional focus, with a global perspective. Many of our units are identical to those offered at Monash's Clayton campus, and are in disciplines where there is a demand for quality graduates in Malaysia and beyond.

### DIVERSE SPECIALISATIONS

Our degrees offer flexibility and choice. You can choose from a wide range of specialisations, from applied microbiology, genomics to tropical environmental biology – all taught by academics who are leaders in their scientific disciplines.



**CLICK HERE TO VIEW  
THE COURSE GUIDE.**

[monash.edu.my/science](https://monash.edu.my/science)

### PRACTICAL EXPERIENCE

Build your professional experience with an internship in the science industry. Credited work placements are available for our Science students and embedded in our Food Science and Technology and Medical Bioscience degrees.

### RESEARCH-LED TEACHING

By merging education and research, we expose our students to the forefront of scientific inquiry. This approach doesn't just create graduates; it nurtures visionaries armed with the tools to shape the world.

### INSPIRING ENVIRONMENTS

Innovation thrives in conducive environments. From cutting-edge laboratories in medical bioscience to technological hubs in food science, our facilities foster collaboration, experimentation, and the pursuit of new frontiers.

**RANKED**

**NO.17** IN THE  
WORLD  
FOR ANATOMY  
AND PHYSIOLOGY

**RANKED**

**NO.31** IN THE  
WORLD  
FOR LIFE SCIENCES  
AND MEDICINE

**RANKED**

**NO.40** IN THE  
WORLD  
FOR CHEMISTRY

**RANKED**

**NO.66** IN THE  
WORLD  
FOR ENVIRONMENTAL  
SCIENCES

**RANKED**

**NO.72** IN THE  
WORLD  
FOR BIOLOGICAL  
SCIENCES

QS World University Rankings by Subject 2024



Monash has an outstanding reputation for research excellence, and I had the privilege of working with renowned professors, collaborating with international research groups and presenting my findings at conferences. These experiences not only fuelled my passion for research but also honed my skills in critical thinking, problem-solving and effective communication, which have proven invaluable in my professional life. Looking back, I am immensely grateful for all the opportunities and experiences studying at Monash has afforded me.”

#### MICHELLE TAN SZE-FAN

Bachelor's Degree (Biotechnology)  
PhD (Microbiology)  
Associate Director, Ipsos UK

Michelle aspires to be a thought leader in the healthcare field, using her voice to help shape public health policies and drive advancements in healthcare.

At Ipsos, she works on projects at the forefront of medical advancements. She is currently exploring the transformative potential of new obesity medications and investigating how GenAI might reshape the doctor-patient relationship, paving the way for more personalised care.





## Bachelor of Science

KPT/JPT (R2/421/6/0027) 10/25 - MQA/SWA0129

**DURATION** 3 YEARS

**INTAKE** FEBRUARY, JULY  
AND OCTOBER

**FEES** RM49,920

Malaysian student

RM58,560

International student

2025 fees per year



**CLICK HERE  
FOR MORE  
COURSE DETAILS.**

**Study science at Monash and learn from leading experts whose research is shaping the world's future.**

This course provides you with a broad science education in your first year, so you can explore your interests before you specialise in one or more areas that inspires you in your second year. This flexibility allows you to explore new areas, further develop your strengths in science, and pursue your interests beyond the area in which you specialise.

In addition to your chosen science major, you'll have the option to use your electives to extend your major to add depth, add a second major or a minor, or study a range of units from across the University.

### CAREER PATHS

- Clinical trials
- Intellectual property management
- Biomedical product industry
- Drug discovery and development
- Food production and safety
- Biodiversity and conservation
- Environmental management
- Analytical/biomedical chemistry
- Biotechnology
- Quality assurance and control
- Process control
- Microbiology
- Natural products research
- Scientific and regulatory affairs.

## CHOOSE YOUR SCIENCE AREA

### MAJOR/MINOR



#### Applied microbiology

Explore microorganisms such as bacteria, fungi, parasites and viruses, and their application in improving health in areas related to industrial processes, agriculture, medicine, genetic engineering, food and bioremediation. You can avoid food spoilage, prevent the spread of infectious diseases, or solve environmental problems by removing pollutants using beneficial microbes.

### MAJOR



#### Biotechnology

Utilise biological systems and/or living organisms to develop new technologies and processes of value to the healthcare industry, agricultural and industrial sectors, and the environment.

### MAJOR



#### Food science and business

Develop a broad view from food production to business, bridging the gap in delivering nutritious, safe, affordable, and sustainable food products to the global market. Choose from three streams: strategic marketing, management, or digital marketing.

### MAJOR



#### Genomics and bioinformatics

Decipher the total genetic makeup of organisms using the diverse range of analytical methods and tools applied to genomic data. These allied fields contribute to superior healthcare, enhanced food security and more.

### MAJOR



#### Medicinal chemistry

Design, develop, and determine the biological activities and properties of drugs. You'll learn how to seek new active chemical compounds from natural products such as rainforest plants, and design novel synthetic compounds.

### MAJOR/MINOR



#### Psychology

Study the human mind, mental processes and resulting behaviour. This is a broad scientific discipline that includes investigations of the brain, memory, perception, reasoning, and mental health and wellbeing.

### MAJOR/MINOR



#### Tropical environmental biology

Study the behaviour of living systems with a strong focus on ecological and environmental issues of global importance such as climate change, biodiversity, sustainability and conservation. You acquire greater awareness of our living earth and help mitigate climate change issues.

### MINOR



#### Chemistry

Explore the science of matter and energy, how atoms and molecules react and interact, and how that behaviour can be harnessed to transform materials, medicine and technology.

### MINOR



#### Genetics and genomics

Study the structure, function, transmission and evolution of genes. Genetics underpins many exciting areas such as biomedical science, conservation biology and forensics.

## Bachelor of Applied Data Science

KPT/JPT (N/0542/6/0002) 10/27 - MQA/PSA 15926

**DURATION** 3 YEARS  
**INTAKE** FEBRUARY, JULY AND OCTOBER

**FEES** RM49,920  
Malaysian student  
RM58,560  
International student  
2025 fees per year



**CLICK HERE**  
FOR MORE  
COURSE DETAILS.

**Skilled, qualified data scientists are highly sought after worldwide.**

You'll learn how to process large volumes of data and turn them into actionable insights across a very wide range of disciplines including biotechnology and pharmaceuticals, biomedical science, genetics and genomics, natural resources and energy.

### AREAS OF STUDY

- Biological science and genetics
- Chemical Sciences • Environmental science
- Biotechnology • Food and nutrition
- Forensic genetics • Health and human physiology.

### CAREER PATHS

- Clinical trial management
- Drug discovery and development
- Analytical/biomedical chemistry
- Clinical science and research management
- Medical, healthcare and insurance industry
- Project management and consultancy
- Food product/process development
- Regulatory affairs and quality assurance.

## Bachelor of Food Science and Technology

KPT/JPT (R2/0721/6/0061) 06/29 - MQA/SWA0794

**DURATION** 3 YEARS  
**INTAKE** FEBRUARY, JULY AND OCTOBER

**FEES** RM49,920  
Malaysian student  
RM58,560  
International student  
2025 fees per year



**CLICK HERE**  
FOR MORE  
COURSE DETAILS.

**Positively impact the health and wellbeing of future generations.**

You'll develop a greater understanding of agricultural raw materials as they're processed and formulated before being presented to the consumer, and of the technology of food such as preservation, processing, packaging and distribution to ensure that food is safe, nutritious and wholesome.

### PROFESSIONAL RECOGNITION

This course is accredited by the International Union of Food Science and Technology (IUFOST).

### WHERE YOU'LL LEARN

Explore key food processes like dehydration, particle size reduction, food fermentation and food packaging in exciting spaces such as our pilot food processing facility.

### AREAS OF STUDY

- Biochemistry • Biology • Chemistry • Food microbiology
- Human nutrition • Laboratory management
- Strategic food quality management
- Food product development and innovation
- Food processing, preservation and packaging • Food chemistry
- Microbiology • Bioprocess technology • Functional foods • Statistics.

### CAREER PATHS

- Food product/process development
- Quality assurance and control
- Sensory science and evaluation
- Food hygiene and safety
- Food packaging
- Flavour/food chemistry
- Food microbiology
- Natural products research.

## Bachelor of Medical Bioscience

KPT/JPT (R2/0510/6/0001) 06/29 - MQA/SWA0795

**DURATION** 3 YEARS  
**INTAKE** FEBRUARY, JULY AND OCTOBER

**FEES** RM49,920  
Malaysian student  
RM58,560  
International student  
2025 fees per year



**CLICK HERE**  
FOR MORE  
COURSE DETAILS.

**Delve into the science at the centre of healthcare.**

This course provides a strong foundation in understanding the human body, its structure and function in processes that underpin human health and disease. You'll study a wide range of interrelated life science topics.

### WHERE YOU'LL LEARN

- Facilities for DNA sequencing, mass spectrometry, confocal microscopy, flow cytometry, high performance liquid chromatography, microbiology and tissue culture
- Life Science Instrument Room, where you'll use the latest technology in medical bioscience.

### CAREER PATHS

Our graduates find employment in:

- clinical laboratories
- forensic science
- medical, healthcare and insurance industry
- regulatory affairs and quality assurance
- biomedical equipment and pharmaceutical industry
- infectious disease/histopathology research
- science journalism
- clinical trial management
- clinical nutrition.

## Bachelor of Science (Honours)

KPT/JPT (R2/421/6/0028) 10/25 - MQA/SWA0130

**DURATION** 1 YEAR  
**INTAKE** FEBRUARY AND JULY

**FEES** RM49,920  
Malaysian student  
RM58,560  
International student  
2025 fees per year



**CLICK HERE**  
FOR MORE  
COURSE DETAILS.

**Gain a higher level of experience in independent analysis and research.**

This additional one-year degree will give you a rich intellectual experience and help you develop a range of transferable skills for enhanced career opportunities.

### AREAS OF SPECIALISATION

- Biotechnology
- Food science and technology
- Medical bioscience
- Medicinal chemistry
- Tropical environmental biology

### PROGRESSION TO FURTHER STUDIES

Doctor of Philosophy (PhD).

### CAREER PATHS

Our graduates work in:

- the drug and pharmaceutical industry
- food manufacturing processes and development
- product commercialisation and business development
- biotechnology product development
- biomanufacturing
- clinical genetics
- research and development.



# ENTRY REQUIREMENTS

When you apply to Monash University for an undergraduate course, you must satisfy all of the following requirements:

1

## MINIMUM AGE REQUIREMENTS

You must be at least 17 years of age to enrol in a Monash University undergraduate course. Some exemptions may apply. For further information, visit [monash.edu.my/requirement-age](https://monash.edu.my/requirement-age)

2

## ACADEMIC ENTRY REQUIREMENTS

The methods for calculating entry scores for our undergraduate courses are based on a range of international senior secondary school, pre-university and foundation year qualifications. The course-specific pages in this guide outline the academic entry scores for the listed qualifications that apply to each undergraduate course.

COUNTRY	QUALIFICATION	ENTRY SCORE
GLOBAL	GCE A Levels	<p>Total score of a maximum of the best 3 A Level subject examinations completed within two years*.</p> <ul style="list-style-type: none"> <li>Score A Level grades as follows: A*(a*) = 5, A(a) = 5, B(b) = 4, C(c) = 3, D(d) = 2, E(e) = 1, U = 0.</li> <li>N (Narrow failure) and U (Unclassified) not to be included in the calculation.</li> <li>A maximum of 1 bonus point is offered when achieving A* in an A Level Subject.</li> </ul> <p>* Subject examinations completed within two years may include more than one sitting. For example subject examinations in June 2019 until June 2021 are acceptable.</p> <p>The Malaysian Qualification Agency (MQA) accepts a minimum D Grade in A Level to be equivalent to the STPM Pass grade. Generally, MQA requires students to have a minimum of two D Grades in A Level, unless a higher requirement is stated in the respective MQA program standards. However, applicants with only one E Grade out of the three best A Level subjects can still be considered by Monash University Malaysia, subject to meeting the entry requirements of both the University and MQA.</p> <p>A Level students are required to obtain a minimum D Grade to meet the respective prerequisite subject requirements of the applied course, including English.</p> <ul style="list-style-type: none"> <li>Minimum English language requirement met by: <ul style="list-style-type: none"> <li>C grade or score of 4 in one of the following IGCSE subjects: Literature in English OR Literature (English) OR English Literature OR Cambridge First Language English (subject code 0522/0627/0990) OR World Literature OR English Language OR English Language A OR English Language B OR C grade in Cambridge IGCSE First Language English 0500 with a grade 3 or lower in Speaking and Listening, OR</li> <li>B grade or score of 5 in IGCSE English as a Second Language, OR</li> <li>C grade or score of 4 in one of the following GCSE/GCE O Level subjects: English Language OR Literature in English OR English Literature OR English OR English Language (Syllabus B), OR</li> <li>C grade in one of the following GCE AS Level subjects: English General Paper OR General Paper OR General Studies OR English language OR Language and Literature in English (previously known as Language and Literature) OR Literature in English OR English Literature OR English Language and Literature, OR</li> <li>D grade in one of the following GCE A Level subjects: English General Paper OR General Studies OR English language OR Literature in English OR English Language and Literature OR English Literature.</li> </ul> </li> <li>Higher English language requirement met by: <ul style="list-style-type: none"> <li>B grade or score of 5 in one of the following IGCSE subjects: Literature in English OR Literature (English) OR English Literature OR Cambridge First Language English (subject code 0522/0627/0990) OR World Literature OR English Language OR English Language A OR English Language B, OR B grade in Cambridge IGCSE First Language English 0500 with a grade 2 or lower in Speaking and Listening, OR</li> <li>A grade or score of 7 in IGCSE English as a Second Language, OR</li> <li>B grade or score of 5 in one of the following GCSE/GCE O Level subjects: English Language OR Literature in English OR English Literature OR English OR English Language (Syllabus B), OR</li> <li>B grade in one of the following GCE AS Level subjects: English General Paper OR General Paper OR General Studies OR English language OR Language and Literature in English (previously known as Language and Literature) OR Literature in English OR English Literature OR English Language and Literature, OR</li> <li>D grade in one of the following GCE A Level subjects: English General Paper OR General Studies OR English language OR Literature in English OR English Language and Literature OR English Literature.</li> </ul> </li> </ul> <p>Monash University only accepts IGCSE First Language English (Subject Code 0500) which has the compulsory Listening and Speaking component in meeting the English language requirements.</p>
	International Baccalaureate (IB) Diploma	<p>Total points as issued on the official final academic transcript (known as the IB Diploma Programme Results) issued by the International Baccalaureate Organization (IBO). Evidence of successful completion must be provided (i.e. Diploma Certificate issued by the IBO).</p> <ul style="list-style-type: none"> <li>Minimum English language requirement met by: <ul style="list-style-type: none"> <li>4 in one of the following SL subjects: English A: Literature, or English A: Language and Literature, or Literature and Performance, OR</li> <li>3 in one of the following HL subjects: English A: Literature, or English A: Language and Literature, OR</li> <li>5 in one of the following SL subjects: English AB, or English B, OR</li> <li>4 in the following HL subject: English B.</li> </ul> </li> <li>Higher English language requirement met by: <ul style="list-style-type: none"> <li>5 in one of the following SL subjects: English A: Literature, or English A: Language and Literature, or Literature and Performance, OR</li> <li>4 in one of the following HL subjects: English A: Literature, or English A: Language and Literature, OR</li> <li>6 in one of the following SL subjects: English AB, or English B, OR</li> <li>5 in the following HL subject: English B.</li> </ul> </li> </ul>

AUSTRALIA	MONASH	
	Monash University Foundation Year (MUFY)	<p>Overall average of the best eight units plus any bonus points that may apply.</p> <ul style="list-style-type: none"> <li>Minimum English language requirement met by successfully completing MUFY English with an overall average of 65% or above.</li> <li>Higher English language requirement met by successfully completing MUFY English with an overall average of 75% or above.</li> </ul> <p>The undergraduate entry requirements published in this guide are for students who commenced the MUFY program in 2024.</p> <p>A student must pass a minimum of eight different units, including English, in order to complete the MUFY successfully. A minimum of six of the eight units must be derived from three completed subjects.</p> <p>Monash University Malaysia recognises the bonus point(s) that may apply to selected courses and qualifications. However, they are subject to further approval by relevant accreditation and government bodies in Malaysia and internationally. The University is obligated to adhere to the requirements set by the accreditation bodies.</p>
	Diploma of Higher Education Studies	Complete and pass eight units and achieve a minimum average required for the corresponding degree.
	Monash College Diploma	<p>To calculate the average mark required for the Monash University destination degree, please refer to the relevant Diploma program information available at: <a href="https://monashcollege.edu.au/courses/diplomas/destination-degrees">monashcollege.edu.au/courses/diplomas/destination-degrees</a></p> <p>The Monash College Diploma Part 2 entry requirements published in this guide are for students commencing their undergraduate destination degree in 2025.</p>
	Australian Year 12 ATAR	Final ATAR as awarded by the relevant Australian state Year 12 authority.
	UNSW Foundation Studies	<p>Final grade point average as awarded on the official final academic transcript issued by University of New South Wales. Evidence of successful completion must be provided.</p> <ul style="list-style-type: none"> <li>Minimum English language requirement met by C grade in Academic English.</li> <li>Higher English language requirement met by B grade in Academic English.</li> </ul>
CANADA	Ontario Secondary School Diploma	<p>Overall average of percentage grades for the best six academic Grade 12 subjects* (excluding workplace preparation courses and open courses) as awarded on the Ontario Student Transcript issued by the Ontario Ministry of Education. Students must achieve a minimum total of 30 credits and complete 'Community Involvement' and the 'Provincial Secondary School Literacy Requirement'. Evidence of successful completion issued by the Ontario Ministry of Education must be provided.</p> <ul style="list-style-type: none"> <li>Minimum English language requirement met by successful completion of Grade 12 'English (course code ENG4C)', OR 'English University Preparation (course code ENG4U)', OR 'English (course code ENG4U)' with an overall average of 50% or above.</li> <li>Higher English language requirement met by successful completion of Grade 12 'English (course code ENG4C)', OR 'English University Preparation (course code ENG4U)', OR 'English (course code ENG4U)' with an overall average of 60% or above.</li> </ul> <p>Monash University only accepts the Ontario Secondary School Diploma from Monash-approved schools.</p> <p>*The grade 12 subjects must be taken from the most recent completed Ontario Student Transcript issued by the Ontario Ministry of Education.</p>
HONG KONG	Hong Kong Diploma of Secondary Education	<p>Total of the best five subjects<sup>^</sup> (Category A and C only – Category B not to be used in calculation) as awarded on the official final academic transcript issued by Hong Kong Examinations and Assessment Authority (HKEAA). Scores grades as follows: Level 1 = 1, Level 2 = 2, Level 3 = 3, Level 4 = 4, Level 5 = 5 or A = 5, B = 4, C = 3, D = 2, E = 1.</p> <p>A maximum of 1 bonus point is offered when achieving Level 5** or Level 5* in a HKDSE Category A subject.</p> <ul style="list-style-type: none"> <li>Minimum English language requirement met by successful completion of HKDSE English Language with an achievement of Level 4 or above</li> <li>Higher English language requirement met by successful completion of HKDSE English Language with an achievement of Level 5 or above.</li> </ul> <p><sup>^</sup> The highest grade will be used in the calculation in the event where individual subject examinations have been sat in multiple sittings.</p> <p>Notes: Subjects that are competency based cannot be included in the calculation. While HKDSE English Language may be used to fulfill Monash University's English language requirement, international students who have completed HKDSE are still required to take a recognised English proficiency test to fulfill the English requirement set by the Malaysian government.</p>
INDIA	All India Senior School Certificate Examination	<p>Overall average of percentage grades (refer to 'TOTAL' column) for the best four academic subjects (excluding Physical Education and non-academic subjects*) issued by the Central Board of Secondary Education (CBSE). Evidence of successful completion is satisfied where 'Result' indicated as 'PASS' is awarded on the official final 'Marks Statement'.</p> <ul style="list-style-type: none"> <li>Minimum English language requirement met by successful completion of 'English Core' with an overall average of 60% or above.</li> <li>Higher English language requirement met by successful completion of 'English Core' with an overall average of 70% or above.</li> </ul> <p>* Non-academic subjects include: Air-Conditioning and Refrigeration; Agriculture; Applied/Commercial Art; Automotive; Beauty and Wellness; Bharatnatyam – Dance; Carnatic Music Mel. Ins.; Carnatic Music Vocal; Carnatic Per. Ins. Mridangam; Design; Entrepreneurship; Fashion Studies; Food Production; Front Office Operations; Hindustani Music Mel. Ins.; Hindustani Music Vocal; Hindustani Per. Ins.; Home Science; Horticulture; Insurance; Kathak – Dance; Kathakali – Dance; Knowledge Tradition &amp; Practices of India; Kuchipudi – Dance; Manipuri – Dance; Music Production; National Cadet Corps (NCC); Odissi – Dance; Office Procedures and Practices; Painting; Physical Education; Retail; Salesmanship; Sculpture; Shorthand (English); Shorthand (Hindi); Textile Design; Tourism; Yoga.</p>
	Indian School Certificate Examination	<p>Overall average of percentage marks for the best four academic subjects (excluding Art, Electricity and Electronics, Fashion Designing, Geometrical and Building Drawing, Geometrical and Mechanical Drawing, Home Science, Hospitality Management, Music, Physical Education, Socially Useful Productive Work and Community Service (SUPW)) and 'Result' indicated as 'PASS CERTIFICATE AWARDED' as awarded on the official final 'Statement of Marks' issued by Council for the Indian School Certificate Examinations.</p> <ul style="list-style-type: none"> <li>Minimum English language requirement met by successful completion of 'English' with an overall average of 60% or above.</li> <li>Higher English language requirement met by successful completion of 'English' with an overall average of 70% or above.</li> </ul>



<b>INDONESIA</b>	SMA3	<p>Meet Monash University's minimum entry requirements based on the calculation guidelines of both the Malaysian Qualifications Agency (MQA) and Monash University.</p> <p>Overall average of semester 1 and semester 2 grade 12 knowledge and skills results (refer to the 'angka'/'nilai' column) as awarded on the official final transcript issued by individual senior secondary schools. Evidence of successful completion must be provided. The schools official grading scale indicating the passing mark must also be provided in order for the correct Monash University undergraduate entry requirements to be applied.</p> <p>All documents submitted must be translated and untranslated.</p> <p>English language requirements met by submission of an IELTS (Academic)/IELTS One Skill Retake (Academic)/IELTS Online or equivalent Monash-approved English proficiency test with the required scores.</p>
<b>MALAYSIA</b>	STPM	<p>Total of the best 3 subjects (refer to 'Nilai Gred Mata Pelajaran' column) excluding Pengajian Am (General Studies) as awarded on the official final academic transcript issued by Majlis Peperiksaan Malaysia (Malaysian Examinations Council). The translated and untranslated final STPM result slip issued by Majlis Peperiksaan Malaysia must be submitted.</p> <p><b>Prior to 2021</b></p> <ul style="list-style-type: none"> <li>• Minimum English language requirement met by C grade in GCE O Level English Language -1119 (SPM)</li> <li>• Higher English language requirement met by B grade in GCE O Level English Language -1119 (SPM)</li> </ul> <p><b>From 2021 and onwards</b></p> <ul style="list-style-type: none"> <li>• Minimum English language requirement met by B grade in SPM English Language and CEFR B2, C1 or C2*</li> <li>• Higher English language requirement met by A grade in SPM English Language and CEFR B2, C1 or C2*</li> </ul> <p>*CEFR grades of A1, A2 or B1 cannot be accepted</p>
	UEC	<p>Overall average of the best 5 subjects* awarded on the Unified Examination Certificate (UEC) Senior Middle Level issued by the United Chinese School Committees Associate of Malaysia (Dong Zong).</p> <p>Only grades A1, A2, B3, B4, B5 and B6 to be included in calculation. C7, C8 and F9 cannot be included in the calculation. Scores grades as follows: A1 = 1, A2 = 2, B3 = 3, B4 = 4, B5 = 5, B6 = 6. It should be noted that a score of A1 is the highest score.</p> <p>*5 subjects must be included in the calculation with a score of B6 grade or higher in each subject.</p> <p>English language requirements met by submission of an IELTS (Academic)/IELTS One Skill Retake (Academic)/IELTS Online or equivalent Monash-approved English proficiency test with the required scores.</p>
	Program Matrikulasi (Matriculation Program)	<p>Final Cumulative Grade Point Average as awarded on the official final academic transcript awarded by the Ministry of Education Malaysia. Evidence of successful completion must be provided.</p> <ul style="list-style-type: none"> <li>• Minimum English language requirement met by successful completion of Bahasa Inggeris (English) with an overall average of C grade or above.</li> <li>• Higher English language requirement met by successful completion of Bahasa Inggeris (English) with an overall average of B grade or above.</li> </ul>
	Foundation in Arts, Sunway College	<p>Overall average of all subjects (refer to the Marks (%) column) as awarded on the final 'official transcript' issued by Sunway College. Evidence of successful completion must be provided.</p> <ul style="list-style-type: none"> <li>• Minimum English language requirement met by successful completion of the three compulsory English subjects during the Foundation in Arts (Language and Communication, Communication: Audience and Context &amp; Language and Knowledge) with an overall average of 65% or above.</li> <li>• Higher English language requirement met by successful completion of the three compulsory English subjects during the Foundation in Arts (Language and Communication, Communication: Audience and Context &amp; Language and Knowledge) with an overall average of 75% or above.</li> </ul>
	Foundation in Science and Technology, Sunway College	<p>Overall average of all subjects (refer to the Marks (%) column) as awarded on the final 'official transcript' issued by Sunway College. Evidence of successful completion must be provided.</p> <p>English language requirements met by submission of an IELTS (Academic)/IELTS One Skill Retake (Academic)/IELTS Online or equivalent Monash-approved English proficiency test with the required scores.</p>
<b>SRI LANKA</b>	Sri Lankan General Certificate of Education (Advanced Level)	<p>Total score of a maximum of the best 3 A Level subjects taken in one examination sitting.* The official final GCE A Level official statement issued by the Democratic Socialist Republic of Sri Lanka must be submitted. Score A Level grades as follows: A = 5, B = 4, C = 3, S = 1, F = 0.</p> <p>*A minimum of 3 subjects are taken in one examination sitting.</p> <p>English language requirements met by submission of an IELTS (Academic)/IELTS One Skill Retake (Academic)/IELTS Online or equivalent Monash-approved English proficiency test with the required scores.</p>
<b>VIETNAM</b>	Upper Secondary School Graduation/High School Diploma	<p>Overall average of all Grade 12 subjects (refer to the whole year/CN column) as awarded on the official final transcript issued by individual senior secondary school in Vietnam. The temporary/provisional high school graduation certificates (Giấy Chung Nhan Tot Nghiep THPT (Tam thoi)) issued by the relevant provincial education and training department OR official Vietnamese High School Diploma graduation certificate (BẰNG TỐT NGHIỆP TRUNG HỌC PHỔ THÔNG) must be provided as evidence of successful completion. All documents submitted must be translated and untranslated.</p> <p>English language requirements met by submission of an IELTS (Academic)/IELTS One Skill Retake (Academic)/IELTS Online or equivalent Monash-approved English proficiency test with the required scores.</p>

Other international qualifications entry requirements can be found at [monash.edu/prior-study](https://monash.edu/prior-study)

The entry requirements published is correct at the time of publication. Please refer to [monash.edu.my](https://monash.edu.my) for the latest information.

### 3 ENGLISH LANGUAGE REQUIREMENTS

When you apply for a Monash University undergraduate course you must satisfy English entry requirements. Different English entry levels apply to undergraduate courses. If you have completed several measures of English proficiency over a period of time, the highest valid measure will be accepted as long as it has been taken within the time limitations specified below. English requirements can be met in one of the following ways:

- **English (Australian Year 12 equivalent):** Students must complete an English subject that is equivalent to units 3 and 4 of VCE English and also meet the required prerequisite score for the Monash University course they have applied for. The equivalent English subject must be taken within three years prior to the Monash course commencement date (other time limitation periods may apply).
- **English is the language of instruction, communication and assessment for the entire institution:** You can meet the English language requirements if you have undertaken studies at an institution where English is the language of instruction, communication and assessment for all aspect of study for the whole of the educational institution by satisfactorily completing a minimum of 24 Monash credit points (one semester of full-time study)<sup>1</sup> of an approved post-secondary qualification or above (AQF Level 5 or above) which must be taken within three years prior to the course commencement date or have fully completed one of the following qualifications:
  - an Australian VET diploma level (or equivalent) which must be taken within three years prior to the Monash course commencement date, OR
  - an Australian bachelor degree (or equivalent) which must be completed and taken within five years prior to the Monash course commencement date.

Documentary evidence in the form of an official letter is required from the institution at which the study was undertaken. This document must be written and signed by the institution's Registrar (or other authorised person) of the education institution to the satisfaction of the Academic Board.

- **English Proficiency Tests:** the following English proficiency tests are accepted by Monash University:
  - IELTS (Academic)/IELTS One Skill Retake (Academic)/IELTS Online (International English Language Testing System).  
For more information visit, [www.ielts.org](http://www.ielts.org)  
The University's minimum English language requirement is an IELTS (Academic)/IELTS One Skill Retake (Academic)/IELTS Online overall band score of 6.5 with no band less than 6.0.
  - TOEFL iBT/TOEFL iBT Paper Edition<sup>2</sup>. For more information visit, [www.ets.org](http://www.ets.org)  
The University's minimum English language requirement is a total score of 79 with 12 in Listening, 13 in Reading, 21 in Writing and 18 in Speaking
  - Pearson Test of English (Academic)<sup>2</sup>. For more information visit, [www.pearsonpte.com](http://www.pearsonpte.com)  
The University's minimum English language requirement is a Pearson Test of English Academic overall score of 58 with no Communicative Skills lower than 50.
  - C1 Advanced (previously known as Cambridge Certificate in Advanced English – CAE)/C2 Proficiency (previously known as Cambridge Certificate of Proficiency in English – CPE)<sup>2</sup>.  
For more information visit, [www.cambridgeenglish.org](http://www.cambridgeenglish.org)  
The University's minimum English language requirement is a minimum overall score of 176 with no skill score lower than 169.

In order for the above English proficiency tests to be considered they must be taken within 24 months prior to the course commencement date.

- **1119 Bahasa Inggris – CEFR (SPM) (awarded from 2021 onwards):**

- The University's minimum English language requirement met by B grade in SPM English Language and CEFR B2, C1 or C2 (CEFR grades of A1, A2 or B1 cannot be accepted)

- **GCE O Level English Language – 1119 (SPM) (prior to 2021)**

- The University's minimum English language requirement is met by C grade in GCE O Level English Language – 1119 (SPM)

It must be taken within three years prior to the course commencement date.

**Higher scores are required for the Bachelor of Human Nutrition and Bachelor of Medical Science and Doctor of Medicine. The following English proficiency tests are accepted by Monash University:**

#### Bachelor of Human Nutrition

- IELTS (Academic)/IELTS One Skill Retake (Academic)/IELTS Online: An overall score of 6.5 or greater with 6.5 in Reading and Listening and 6.0 in Writing and Speaking
- TOEFL iBT/TOEFL iBT Paper Edition: An overall score of 79 or greater with 20 in Listening, 19 in Reading, 21 in Writing and 18 in Speaking
- Pearson Test of English (Academic): An overall score of 58 or above with Listening and Reading score not lower than 58 and Writing and Speaking score not lower than 50
- C1 Advanced/C2 Proficiency: An overall score of 176 with Listening and Reading score not lower than 176 and Writing and Speaking score not lower than 169

#### Bachelor of Medical Science and Doctor of Medicine

- Higher score in English (Australian Year 12 equivalent)
- 1119 Bahasa Inggris – CEFR (SPM) (awarded from 2021 onwards): A grade or above in SPM English language and CEFR B2, C1 or C2; OR GCE O Level English Language – 1119 (SPM) (prior to 2021): B grade
- IELTS (Academic)/IELTS One Skill Retake (Academic)/IELTS Online: An overall score of 7.0 or greater with no individual band less than 6.5
- TOEFL iBT/TOEFL iBT Paper Edition: An overall score of 94 or greater with 20 in Listening, 19 in Reading, 20 in Speaking and 24 in Writing
- Pearson Test of English (Academic): An overall score of 65 or above with no Communication Skills lower than 58
- C1 Advanced/C2 Proficiency: An overall score of 185 with no skill score lower than 176
- Higher score in GCE A Level English.

<sup>1</sup> Language of Instruction based on minimum 24 Monash credit points of an incomplete post-secondary qualification is not eligible to international students due to MQA/Student Visa requirements.

<sup>2</sup> Monash University does not accept TOEFL iBT Special Home Edition, Pearson Test of English (Academic) Online and Cambridge Linguaskill General as satisfying the English entry requirement for any Monash course.



## MONASH ENGLISH

Monash University Malaysia also offers Monash English (ME) for students who do not meet the undergraduate or graduate English entry requirements. Upon successful completion of ME, you will gain the proficiency needed to succeed at Monash University. Some Monash University courses do not accept ME.

For more information visit, [monash.edu.my/monash-english](https://monash.edu.my/monash-english)

For more information regarding admission to coursework courses and units of study procedures please refer to the following link:

[monash.edu/admissions/entry-requirements/english-language](https://monash.edu/admissions/entry-requirements/english-language)

Monash University reserves the right to ask you to undertake an approved English proficiency test to meet the English course requirements.

The published scores are based on Monash University's English requirements and subject to change.

In addition to the University's English requirements, the Malaysian Government has set English requirements for each course. When you apply, you will be advised if you have met those requirements.

ME is not applicable for the Bachelor of Medical Science and Doctor of Medicine. The 10-week ME is not applicable for a pathway to the Bachelor of Human Nutrition.

Duration	Intakes	2025 fees	Entry Requirements
<b>MONASH ENGLISH (20-WEEK)</b>			
20 weeks	February and August	Malaysian student <b>RM11,200</b> International student <b>RM11,600</b>	<ul style="list-style-type: none"> <li>• C1 Advanced/C2 Proficiency: overall score of 162 with no score lower than 154; or</li> <li>• IELTS (Academic)/IELTS One Skill Retake (Academic)/IELTS Online: overall score of 5.5 with no score lower than 5.0; or</li> <li>• TOEFL iBT/TOEFL iBT Paper Edition: overall score of 46, with a minimum score of 14 in writing, score of 14 in speaking, score of 4 in reading and score of 4 in listening; or</li> <li>• PTE Academic: overall score of 42, with no score lower than 36.</li> </ul> <p>For Bachelor of Human Nutrition as destination degree:</p> <ul style="list-style-type: none"> <li>• C1 Advanced/C2 Proficiency: overall score of 169 with no score lower than 169; or</li> <li>• IELTS (Academic)/IELTS One Skill Retake (Academic)/IELTS Online: overall score of 6.0 with no score lower than 6.0; or</li> <li>• TOEFL iBT/TOEFL iBT Paper Edition: overall score of 60, with a minimum score of 21 in writing, score of 18 in speaking, score of 13 in reading and score of 12 in listening; or</li> <li>• PTE Academic: overall score of 50, with no score lower than 50.</li> </ul> <p>Any other qualifications or requirements recognised by Monash University and the Malaysian government.</p>
<b>MONASH ENGLISH (10-WEEK)</b>			
10 weeks	May and October	Malaysian student <b>RM6700</b> International student <b>RM7400</b>	<ul style="list-style-type: none"> <li>• C1 Advanced/C2 Proficiency: overall score of 169 with no score lower than 162; or</li> <li>• IELTS (Academic)/IELTS One Skill Retake (Academic)/IELTS Online: overall score of 6.0 with no score lower than 5.5; or</li> <li>• TOEFL iBT/TOEFL iBT Paper Edition: overall score of 60, with a minimum score of 18 in writing, score of 16 in speaking, score of 8 in reading and score of 7 in listening; or</li> <li>• PTE Academic: overall score of 50 with no score lower than 42.</li> </ul> <p>The 10-week program is not applicable as a pathway to the Bachelor of Human Nutrition.</p> <p>Any other qualifications or requirements recognised by Monash University and the Malaysian Government.</p>



# A GUIDE TO UNDERGRADUATE COURSES, FEES AND ENTRY REQUIREMENTS

Course	Duration	Intakes	2025 fees	Prerequisites and additional requirements	
SCHOOL OF PATHWAYS AND IMMERSION					
Diploma of Higher Education Studies	1 year (full-time)	February, July and October	Malaysian student Non-science stream RM38,880 (per year) Science stream RM43,680 (per year)	International student Non-science stream RM44,640 (per year) Science stream RM50,400 (per year)	English (Monash's minimum requirements apply)
SCHOOL OF ARTS AND SOCIAL SCIENCES					
Bachelor of Arts and Social Sciences Areas of study: <ul style="list-style-type: none"><li>• Communication</li><li>• Film, television and screen studies</li><li>• Gender studies</li><li>• Global studies</li><li>• Psychology</li><li>• Public relations (minor)</li><li>• Writing (minor).</li></ul>	3 years	February, July and October	Malaysian student RM41,760 (per year)	International student RM48,480 (per year)	English (Monash's minimum requirements apply)
Bachelor of Digital Media and Communication	3 years	February, July and October	Malaysian student RM41,760 (per year)	International student RM48,480 (per year)	English (Monash's minimum requirements apply)
Bachelor of Arts (Honours)	1 year	February	Malaysian student RM41,760 (per year)	International student RM48,480 (per year)	English (Monash's minimum requirements apply. Monash English is accepted)
SCHOOL OF BUSINESS					
Bachelor of Business and Commerce Areas of study: <ul style="list-style-type: none"><li>• Accountancy</li><li>• Applied economics</li><li>• Banking and financial management</li><li>• Business and commerce studies</li><li>• Business analytics</li><li>• Digital marketing</li><li>• Econometrics and business statistics</li><li>• Financial technology (FinTech)</li><li>• International business management</li><li>• Management</li><li>• Strategic marketing</li><li>• Business law and taxation (minor only)</li><li>• Sustainability and responsible management (minor only).</li></ul>	3 years	February, July and October	Malaysian student RM42,720 (per year)	International student RM50,400 (per year)	English (Monash's minimum requirements apply) Mathematics (Australian Year 11 equivalent)
Bachelor of Digital Business	3 years	February and July	Malaysian student RM42,720 (per year)	International student RM50,400 (per year)	English (Monash's minimum requirements apply) Mathematics (Australian Year 12 equivalent)
Bachelor of Business and Commerce (Honours)	1 year	July	Malaysian student RM42,720 (per year)	International student RM50,400 (per year)	English (Monash's minimum requirements apply. Monash English is accepted)

1 The Malaysian Qualification Agency (MQA) accepts a minimum D Grade in A Level to be equivalent to the STPM Pass grade. For more information, please refer to page 41.  
2 The undergraduate entry requirements published in this guide are for students who commenced the MUFY program in 2024.  
3 Diploma of Higher Education Studies and Monash College Diploma Part 2 provide a pathway into the second year of the corresponding undergraduate studies.  
4 The Monash College Diploma Part 2 entry requirements published in this guide are for students commencing their undergraduate destination degree in 2025.  
5 Please refer to [priorstudy.monash.edu/prior-study/](https://priorstudy.monash.edu/prior-study/) for the full entry score.



QUALIFICATION	GLOBAL		AUSTRALIA					CANADA	HONG KONG	INDIA		INDONESIA				MALAYSIA					SRI LANKA	VIETNAM
	GCE A Level <sup>1</sup>	International Baccalaureate (IB) Diploma	MONASH			ATAR	UNSW Foundation Studies	Ontario Secondary School Diploma	Hong Kong Diploma of Secondary Education	All India Senior School Certificate Examination	Indian School Certificate Examination	SMA3 <sup>5</sup>				STPM	UEC	Program Matrikulasi (Matriculation Program)	Foundation in Arts, Sunway College	Foundation in Science and Technology, Sunway College	Sri Lankan General Certificate of Education (Advanced Level)	High School Diploma
			Monash University Foundation Year <sup>2</sup>	Diploma of Higher Education Studies (DHES) <sup>3</sup>	Monash College Diploma Part 2 <sup>4</sup>																	
												KKM 65	KKM 70	KKM 75	KKM 80							

6	24	60%	N/A	N/A	65	6	72.3%	15	60%	55%	73%	75%	78%	82.5%	7	≤6	1.7	55%	55%	8	7.5
---	----	-----	-----	-----	----	---	-------	----	-----	-----	-----	-----	-----	-------	---	----	-----	-----	-----	---	-----

**Prerequisite for science stream:** in addition to English (as specified), one of Biology, Chemistry, Environmental Science, Geography, Physics, Psychology or Higher level Mathematics (Australian Year 12 equivalent).

**Prerequisite for business stream:** in addition to English (as specified), Mathematics (Australian Year 11 equivalent).

**Prerequisite for information technology stream:** in addition to English (as specified), Higher level Mathematics (Australian Year 12 equivalent).

[monash.edu.my/sass](https://monash.edu.my/sass)

7	25	60%	50%	50%	70	6.5	75.4%	16	66%	60%	76%	78%	80%	83%	7.3	≤6	2	60%	60%	9	8
7	25	60%	50%	50%	70	6.5	75.4%	16	66%	60%	76%	78%	80%	83%	7.3	≤6	2	60%	60%	9	8

#### Requirements

- An Australian bachelor's degree (or equivalent) with a minimum overall WAM of 75.
- Applicants must meet the undergraduate requirements of their chosen Honours area of study including: 48 credit points of studies and obtained a distinction grade average (75%) or above in 24 credit points at level three.
- All eligible applicants must satisfactorily pass an interview.

Note: Applicants with an Australian bachelor's degree (or equivalent) with an overall WAM between 70 and 75 may be considered upon satisfactory completion of an interview. Applicants will only be invited for interview if there are places remaining in the course and a supervisor is available for their chosen area of study.

For some areas of study completion of specific units, or their equivalent, may also be required for admission to honours. The details are provided with the requirements for each area of study to which this applies.

#### Double degree students

Applicants who are enrolled in an Australian-based Monash double degree course and who have not yet completed the requirements for the two degrees, may be eligible to enrol in this honours program once they have completed 144 points of study, including the normal requirements for the bachelor's degree containing the intended honours area of study.

Double degree students are only required to obtain a distinction grade average (75%) or above in 18 credit points of studies in their chosen Honours area of study at level three.

#### Additional selection criteria

- Applicants must submit a dissertation proposal with a minimum of 1000 words.

[monash.edu.my/business](https://monash.edu.my/business)

7	25	60%	50%	50%	70	6.5	75.4%	16	66%	60%	76%	78%	80%	83%	7.3	≤6	2	60%	60%	9	8
8	26	70%	N/A	N/A	75	7	78.5%	17	70%	65%	80%	82.5%	83%	85%	7.9	≤5	2.33	65%	65%	10	8.14

#### Requirements

Successful completion of an Australian undergraduate degree (or equivalent) with a distinction grade average (70%) or above in 24 points of studies at level 3 in the relevant area of business.

Course	Duration	Intakes	2025 fees		Prerequisites and additional requirements
--------	----------	---------	-----------	--	---

### SCHOOL OF ENGINEERING

Bachelor of Chemical Engineering (Honours)	4 years	February, July and October	Malaysian student <b>RM53,280</b> (per year)	International student <b>RM62,880</b> (per year)	English (Monash's minimum requirements apply)
Bachelor of Civil Engineering (Honours)					Higher level Mathematics and one of Chemistry or Physics (Australian Year 12)
Bachelor of Electrical and Computer Systems Engineering (Honours)					Meeting the Monash course prerequisites are also subject to the 10 year rule.
Bachelor of Materials Engineering (Honours) <sup>6</sup>					
Bachelor of Mechanical Engineering (Honours)					
Bachelor of Robotics and Mechatronics Engineering (Honours)					
Bachelor of Software Engineering (Honours)					

### SCHOOL OF INFORMATION TECHNOLOGY

Bachelor of Computer Science <sup>7</sup>	3 years	February, July and October	Malaysian student <b>RM45,600</b> (per year)	International student <b>RM53,280</b> (per year)	English (Monash's minimum requirements apply) Higher level Mathematics (Australian Year 12 equivalent)
Bachelor of Computer Science in Data Science <sup>7</sup>	3 years	February, July and October	Malaysian student <b>RM45,600</b> (per year)	International student <b>RM53,280</b> (per year)	English (Monash's minimum requirements apply) Higher level Mathematics (Australian Year 12 equivalent)
Bachelor of Computer Science (Honours)	1 year	February and July	Malaysian student <b>RM45,120</b> (per year)	International student <b>RM52,800</b> (per year)	English (Monash's minimum requirements apply)

### JEFFREY CHEAH SCHOOL OF MEDICINE AND HEALTH SCIENCES

Bachelor of Medical Science and Doctor of Medicine	5 years	February	Malaysian student <b>RM114,240</b> (per year)	International student <b>RM134,880</b> (per year)	Higher level English (See page 44. Monash English is not accepted) Chemistry, Biology, and either Physics or Mathematics (Year 12 equivalent, with excellent results)
Bachelor of Human Nutrition	3 years	February and July	Malaysian student <b>RM49,920</b> (per year)	International student <b>RM58,560</b> (per year)	English (Monash's minimum requirements apply except for English Proficiency Tests. See page 44.) Two of the following subjects at Australian Year 12 equivalent: • Biology • Chemistry • Higher level Mathematics or Physics.
Bachelor of Medical Science (Honours)	1 year	February, July and November	Malaysian student <b>RM48,960</b> (per year)	International student <b>RM58,080</b> (per year)	English (Monash's minimum requirements apply)
Bachelor of Psychology	3 years	February, July and October	Malaysian student <b>RM41,760</b> (per year)	International student <b>RM48,480</b> (per year)	English (Monash's minimum requirements apply) A Credit average in Mathematics (Australian Year 11 equivalent) OR a Pass average in Mathematics (Australian Year 12 equivalent); AND A Credit average in one of Biology, Chemistry, Physics, General Science or Applied Science (all Australian Year 11 equivalent) OR a Pass average in one of Biology, Chemistry, Physics, General Science or Applied Science (all Australian Year 12 equivalent)
Bachelor of Psychology and Business	3 years	February, July and October	Malaysian student <b>RM42,720</b> (per year)	International student <b>RM50,400</b> (per year)	English (Monash's minimum requirements apply) A Credit average in Mathematics (Australian Year 11 equivalent) OR a Pass average in Mathematics (Australian Year 12 equivalent); AND A Credit average in one of Biology, Chemistry, Physics, General Science or Applied Science (all Australian Year 11 equivalent) OR a Pass average in one of Biology, Chemistry, Physics, General Science or Applied Science (all Australian Year 12 equivalent)
Bachelor of Psychology (Honours)	1 year	February	Malaysian student <b>RM42,720</b> (per year)	International student <b>RM49,920</b> (per year)	English (Monash's minimum requirements apply)

<sup>1</sup> The Malaysian Qualification Agency (MQA) accepts a minimum D Grade in A Level to be equivalent to the STPM Pass grade. For more information, please refer to page 41.

<sup>2</sup> The undergraduate entry requirements published in this guide are for students who commenced the MUFY program in 2024.

<sup>3</sup> Diploma of Higher Education Studies and Monash College Diploma Part 2 provide a pathway into the second year of the corresponding undergraduate studies.

<sup>4</sup> The Monash College Diploma Part 2 entry requirements published in this guide are for students commencing their undergraduate destination degree in 2025.

<sup>5</sup> Please refer to [priorstudy.monash.edu/prior-study/](https://priorstudy.monash.edu/prior-study/) for the full entry score.



QUALIFICATION	GLOBAL		AUSTRALIA					CANADA	HONG KONG	INDIA		INDONESIA				MALAYSIA					SRI LANKA	VIETNAM
	GCE A Level <sup>1</sup>	International Baccalaureate (IB) Diploma	MONASH			ATAR	UNSW Foundation Studies	Ontario Secondary School Diploma	Hong Kong Diploma of Secondary Education	All India Senior School Certificate Examination	Indian School Certificate Examination	SMA3 <sup>5</sup>				STPM	UEC	Program Matrikulasi (Matriculation Program)	Foundation in Arts, Sunway College	Foundation in Science and Technology, Sunway College	Sri Lankan General Certificate of Education (Advanced Level)	High School Diploma
			Monash University Foundation Year <sup>2</sup>	Diploma of Higher Education Studies (DHES) <sup>3</sup>	Monash College Diploma Part 2 <sup>4</sup>																	
												KKM 65	KKM 70	KKM 75	KKM 80							

[monash.edu.my/engineering](https://monash.edu.my/engineering)

	10	30	76.25%	N/A	60%	85	8	84.8%	19	80%	75%	85%	87.5%	88%	90%	9.1	≤3.4	3	N/A	75%	12	8.42
--	----	----	--------	-----	-----	----	---	-------	----	-----	-----	-----	-------	-----	-----	-----	------	---	-----	-----	----	------

[monash.edu.my/it](https://monash.edu.my/it)

	9	28	70%	60%	60%	80	7.5	81.6%	18	75%	70%	83%	84%	85%	88%	8.5	≤4.2	2.67	Δ	70%	11	8.28
	9	28	70%	60%	60%	80	7.5	81.6%	18	75%	70%	83%	84%	85%	88%	8.5	≤4.2	2.67	Δ	70%	11	8.28

#### Requirements

Successful completion of a relevant Australian bachelor's degree (or equivalent) with an average of at least 70% overall or equivalent qualification and experience approved by the faculty.

[monash.edu.my/jcsmhs](https://monash.edu.my/jcsmhs)

	14*	36	85%	N/A	N/A	95	9	91%	23	85%	80%	N/A	N/A	N/A	N/A	10.3	≤1.8	3.7	N/A	85%	14	N/A
--	-----	----	-----	-----	-----	----	---	-----	----	-----	-----	-----	-----	-----	-----	------	------	-----	-----	-----	----	-----

\*For GCE A Level, students must obtain a minimum of 2A and 1B.

#### Extra requirements

- Students must be 18 years of age upon intake commencement date.
- Complete the ISAT (📄 [www.acer.edu.au/isat](https://www.acer.edu.au/isat)) and be available for interviews if selected. Forecast results are not accepted.
- Meet the minimum entry requirements set by the Malaysian Medical Council (may be subject to change). Visit 📄 [www.mmc.gov.my](https://www.mmc.gov.my) for details.
- Sri Lankan students must meet requirements set by the Sri Lanka Medical Council. Visit 📄 [www.srilankamedicalcouncil.org](https://www.srilankamedicalcouncil.org) for details.
- Indian nationals must meet additional requirements set by the Malaysian Medical Council. Visit 📄 [www.mmc.gov.my](https://www.mmc.gov.my) for details.

Note: Campus transfer is not available.

	8	26	67.5%	N/A	N/A	75	7	78.5%	17	70%	65%	80%	82.5%	83%	85%	7.9	≤5	2.33	N/A	65%	10	8.14
--	---	----	-------	-----	-----	----	---	-------	----	-----	-----	-----	-------	-----	-----	-----	----	------	-----	-----	----	------

This course is only available to medical students who have successfully completed at least the first three years of the undergraduate medical program at Monash University with a credit (60%) average.

	8	26	67.5%	N/A	N/A	75	7	78.5%	17	70%	65%	80%	82.5%	83%	85%	7.9	≤5	2.33	65%	65%	10	8.14
	7	25	67.5%	N/A	N/A	70	6.5	75.4%	16	66%	60%	76%	78%	80%	83%	7.3	≤6	2	60%	60%	9	8

Successful completion of a bachelor's degree with a major sequence in psychology accredited by the Australian Psychology Accreditation Council (APAC), or qualification assessed as equivalent by APAC. Admission to the honours year is determined solely by academic merit. The minimum requirement is a distinction average (75%) in core psychology units at the second and third-year level. In addition, the applicant must demonstrate a suitable background in research methods. Entry may be limited.

<sup>6</sup> This is a four-year degree where you will study your first two years in Malaysia and your final years at our Clayton campus in Melbourne, Australia. Following completion of the first two years of Bachelor of Engineering (Honours) in Materials Engineering, students must transfer to the Clayton campus via campus transfer for the remaining two years. WAM 50% is a transfer condition.

<sup>7</sup> According to the MQA Program Standards, only Diploma applicants who completed a Diploma in Science and Technology or a Diploma in Computing fields can be considered for enrolment into a bachelor's degree in computer science.

<sup>Δ</sup> To be assessed based on case-by-case basis.

Course	Duration	Intakes	2025 fees		Prerequisites and additional requirements
SCHOOL OF PHARMACY					
Bachelor of Pharmacy (Honours)	4 years	February	Malaysian student RM58,560 (per year)	International student RM69,120 (per year)	English (Monash's minimum requirements apply) Chemistry, Higher level Mathematics and Biology (Australian Year 12 equivalent)
Bachelor of Pharmaceutical Science	3 years	February	Malaysian student RM49,920 (per year)	International student RM58,560 (per year)	English (Monash's minimum requirements apply) Chemistry and Higher level Mathematics (Australian Year 12 equivalent)
Bachelor of Pharmaceutical Science (Honours)	1 year	February	Malaysian student RM48,000 (per year)	International student RM56,160 (per year)	English (Monash's minimum requirements apply)
SCHOOL OF SCIENCE					
Bachelor of Science Majors: • Applied microbiology • Biotechnology • Food science and business • Genomics and bioinformatics • Medicinal chemistry • Psychology Tropical environmental biology.  Minors: • Applied microbiology • Chemistry • Genetics and genomics • Psychology • Tropical environmental biology.	3 years	February, July and October	Malaysian student RM49,920 (per year)	International student RM58,560 (per year)	English (Monash's minimum requirements apply) One of Biology, Chemistry, Environmental Science, Geography, Physics, Psychology or Higher level Mathematics (Australian Year 12 equivalent) Meeting the Monash course prerequisites are also subject to the 5 year rule.
Bachelor of Applied Data Science	3 years	February, July and October	Malaysian student RM49,920 (per year)	International student RM58,560 (per year)	English (Monash's minimum requirements apply) Higher level Mathematics (Australian Year 12 equivalent)
Bachelor of Food Science and Technology	3 years	February, July and October	Malaysian student RM49,920 (per year)	International student RM58,560 (per year)	English (Monash's minimum requirements apply) One of Biology, Chemistry, or Higher level Mathematics (Australian Year 12 equivalent)
Bachelor of Medical Bioscience	3 years	February, July and October	Malaysian student RM49,920 (per year)	International student RM58,560 (per year)	English (Monash's minimum requirements apply) One of Biology, Chemistry, or Higher level Mathematics (Australian Year 12 equivalent)
Bachelor of Science (Honours)	1 year	February and July	Malaysian student RM49,920 (per year)	International student RM58,560 (per year)	English (Monash's minimum requirements apply)
DOUBLE DEGREES					
Bachelor of Business and Commerce and Bachelor of Computer Science <sup>6</sup>	4 years	February, July and October	Malaysian student RM45,600 (per year)	International student RM53,280 (per year)	English (Monash's minimum requirements apply) Higher level Mathematics (Australian Year 12 equivalent)
Bachelor of Business and Commerce and Bachelor of Digital Media and Communication	4 years	February, July and October	Malaysian student RM42,720 (per year)	International student RM50,400 (per year)	English (Monash's minimum requirements apply) Mathematics (Australian Year 11 equivalent)

1 The Malaysian Qualification Agency (MQA) accepts a minimum D Grade in A Level to be equivalent to the STPM Pass grade. For more information, please refer to page 41.  
 2 The undergraduate entry requirements published in this guide are for students who commenced the MUFE program in 2024.  
 3 Diploma of Higher Education Studies and Monash College Diploma Part 2 provide a pathway into the second year of the corresponding undergraduate studies.  
 4 The Monash College Diploma Part 2 entry requirements published in this guide are for students commencing their undergraduate destination degree in 2025.  
 5 Please refer to [priorstudy.monash.edu/prior-study/](https://priorstudy.monash.edu/prior-study/) for the full entry score.  
 6 According to the MQA Program Standards, only Diploma applicants who completed a Diploma in Science and Technology or a Diploma in Computing fields can be considered for enrolment into a bachelor's degree in computer science.  
 Δ To be assessed based on case-by-case basis.



GLOBAL		AUSTRALIA				CANADA	HONG KONG	INDIA	INDONESIA				MALAYSIA				SRI LANKA	VIETNAM			
QUALIFICATION	GCE A Level <sup>1</sup>  International Baccalaureate (IB) Diploma	MONASH			ATAR	UNSW Foundation Studies	Ontario Secondary School Diploma	Hong Kong Diploma of Secondary Education	All India Senior School Certificate Examination	Indian School Certificate Examination	SMA3 <sup>5</sup>				STPM	UEC	Program Matrikulasi (Matriculation Program)	Foundation in Arts, Sunway College	Foundation in Science and Technology, Sunway College	Sri Lankan General Certificate of Education (Advanced Level)	High School Diploma
		Monash University Foundation Year <sup>2</sup>	Diploma of Higher Education Studies (DHES) <sup>3</sup>	Monash College Diploma Part 2 <sup>3,4</sup>							KKM 65	KKM 70	KKM 75	KKM 80							

[monash.edu.my/pharmacy](https://monash.edu.my/pharmacy)

12	33	75%	N/A	N/A	90	8.5	87.9%	21	83%	77%	89%	90%	92.5%	95%	9.7	≤2.6	3.33	N/A	80%	13	8.56
----	----	-----	-----	-----	----	-----	-------	----	-----	-----	-----	-----	-------	-----	-----	------	------	-----	-----	----	------

**Extra requirements**

- Applicants to submit a declaration on personal conduct and professional competencies
- Applicants to pass an aptitude test and/or an interview and/or university entrance examination
- Malaysian students must obtain at least a C grade in Bahasa Melayu (Malay language) and English in the Sijil Pelajaran Malaysia (SPM), or equivalent before enrolling into the course.
- Meet minimum entry requirements set by the Pharmacy Board of Malaysia (may subject to change). Visit [www.pharmacy.gov.my/v2/ms/entri/syarat-syarat-kelayakan-masuk-minimum-ke-program-farmasi.html](https://www.pharmacy.gov.my/v2/ms/entri/syarat-syarat-kelayakan-masuk-minimum-ke-program-farmasi.html) for details.

9.5	29	72.5%	N/A	N/A	82.5	7.75	83.2%	18	78.5%	72.5%	84%	85%	87.5%	89%	8.8	≤3.8	2.84	N/A	72.5%	11	8.35
-----	----	-------	-----	-----	------	------	-------	----	-------	-------	-----	-----	-------	-----	-----	------	------	-----	-------	----	------

**Requirements**

Successful completion of an Australian bachelor's degree (or equivalent) in pharmacy, pharmaceutical science, medicinal chemistry, formulation science, biomedical science, or other related field with an average overall distinction grade (70%) or higher in the final year of the course, or equivalent qualifications and experience approved by the faculty's Graduate Research Committee.

[monash.edu.my/science](https://monash.edu.my/science)

9	28	72.5%	50%	55%	80	7.5	81.6%	18	75%	70%	83%	84%	85%	88%	8.5	≤4.2	2.67	70%	70%	11	8.28
---	----	-------	-----	-----	----	-----	-------	----	-----	-----	-----	-----	-----	-----	-----	------	------	-----	-----	----	------

**Prerequisite**

Studies must have been completed within five years of intended commencement. If you haven't studied science in the past five years, you may still meet the requirements if you can demonstrate that you've engaged with science after your studies. This could be through work, teaching or volunteering in a capacity where you engaged in science in meaningful ways. You can provide us with a CV, letter of support from an employer/supervisor, or other relevant forms of written proof.

9	28	72.5%	N/A	60%	80	7.5	81.6%	18	75%	70%	83%	84%	85%	88%	8.5	≤4.2	2.67	Δ	70%	11	8.28
8	26	63.75%	50%	50%	75	7	78.5%	17	70%	65%	80%	82.5%	83%	85%	7.9	≤5	2.33	N/A	65%	10	8.14
8	26	67.5%	50%	50%	75	7	78.5%	17	70%	65%	80%	82.5%	83%	85%	7.9	≤5	2.33	N/A	65%	10	8.14

**Requirements**

Successful completion of a Bachelor of Science (or equivalent) with at least distinction average (70%) in 24 points of level three units (or equivalent) in the intended honours discipline. The units upon which admission to the Honours program is based must have been completed no more than five years prior to commencement of the course.

9	28	70%	N/A	60%	80	7.5	81.6%	18	75%	70%	83%	84%	85%	88%	8.5	≤4.2	2.67	Δ	70%	11	8.28
7	25	60%	N/A	55%	70	6.5	75.4%	16	66%	60%	76%	78%	80%	83%	7.3	≤6	2	60%	60%	9	8

Entry requirements are subject to change. Please refer to [monash.edu.my](https://monash.edu.my) for the latest updates.

# HOW TO APPLY

## BEFORE YOU APPLY

For your application to be successful, you must satisfy the academic performance, English language proficiency standard and be at least 17 years of age at your time of enrolment.

Use [monash.edu.my/study](https://monash.edu.my/study) to check:

- academic entry requirements
- English entry requirements
- prerequisite subject requirements
- additional requirements (if applicable)
- special requirements (see course handbook)
- [handbook.monash.edu](https://handbook.monash.edu)
- application deadlines
- start dates
- fees.

Have all relevant documentation and information ready to apply online:

- a valid email address
- copy of your IC/passport information page
- details of the courses (title and course code) you intend to apply for
- all academic documents (transcripts and/or work experience) in a file format suitable for upload
- evidence that you meet the English language requirements (eg. IELTS test scores) in a file format suitable for upload
- documents that support any application for credit for prior learning (including all official transcripts or academic results from previous
- studies, and copies of the subject syllabuses) in a file format suitable for upload.

If documents are in a language other than English, English-translated copies must also be provided. Applications will only be processed once all the required documentation is received.

### WHEN SHOULD YOU APPLY?

Each intake period begins after a series of important deadlines that you must meet to enrol successfully. The deadlines differ for Malaysian, international, and medical students.

Visit [monash.edu.my/intakes](https://monash.edu.my/intakes) to check our application and enrolment deadlines.

Apply online as early as possible as some courses may close a few months before the course start date. This allows time for your application to be processed and can help to secure a place if your preferred course has limited places.

If you're an international student, applying early also gives you time to get your student visa, which you must apply for no later than two months before your course commencement.

## APPLICATION PROCESS

1

### APPLY ONLINE

An online application should take between 15 and 30 minutes if you have all your details and documentation ready.

Visit [monash.edu.my/submit](https://monash.edu.my/submit) to apply for your preferred course.

#### APPLICATION FEES

An application fee (non-refundable) of RM100 must be paid when you submit your application, or AUD35 when you pay on the My.App portal. Your application won't be processed unless you've paid this fee.

Your payment options are:

- JomPAY
- Online credit card
- Direct bank-in (Online banking/ATM cash deposit/Bank transfer/Cheque)
- Over the counter
- FlyWire/Telegraphic transfer (International).

For more information, visit [monash.edu.my/apply-online](https://monash.edu.my/apply-online)

2

### YOUR APPLICATION IS ASSESSED

Your application will be assessed according to the University's entry requirements. You'll then receive either one of these notifications:

#### LETTER OF OFFER

If you meet all the conditions for entry, a Full Offer will be issued. The Offer Letter will confirm the details of the offer being made, namely: course title and start date, length of course, fee information and any conditions that may apply. The Offer Letter will be sent to you and your agent by email only and acceptances must be made by the offer lapse date stated in your Offer Letter.

#### CONDITIONAL OFFER

This letter will inform you that the offer is made with conditions which need to be satisfied. Evidence must be shown that you've met the conditions before a conditional offer can be converted to a full offer, such as:

##### i. Other conditions

This generally occurs because you haven't submitted all the required documentation in your application. Other reasons may be stated in your letter. Your admission won't be confirmed until you satisfy all conditions, which means arranging for all outstanding documents to be submitted to Admissions and Student Pass, Monash University Malaysia.

##### ii. English language requirement condition

In the event the English language requirement isn't met, you'll need to re-sit for the necessary English language qualification and submit the results to meet the requirements. The campus offers the Monash English program, which runs for 10 or 20 weeks. You can write to [mum.admissions@monash.edu](mailto:mum.admissions@monash.edu) to enrol in the program (if eligible).

##### iii. Deadlines for meeting your conditions

There are deadlines by which you must satisfy the conditions of your offer. In the event that you fail to satisfy the conditions by the lapse date, the conditional offer shall immediately become null and void and of no further force or effect. You'll have to reapply for admission at the next available intake.

#### REJECTION LETTER

A rejection letter will be issued if you're unsuccessful in meeting Monash University and/or the Malaysian Government (Malaysian Qualification Agency)'s requirements.

3

### ACCEPT YOUR OFFER

To secure a place at Monash University Malaysia, you must accept the offer before the deadline stated in your Offer Letter with relevant payment of fee. Failing to do so will cause the offer to lapse. Details on how to accept the offer will be provided in your Offer Letter.

Visit [monash.edu.my/accept](https://monash.edu.my/accept)

4

### SUBMIT YOUR STUDENT PASS APPLICATION

FOR INTERNATIONAL STUDENTS ONLY

You'll be advised on whether:

- you should apply directly via the Education Malaysia Global Services portal at [visa.educationmalaysia.gov.my/customer/account/login/](https://visa.educationmalaysia.gov.my/customer/account/login/)
- Monash will submit on your behalf.

For more information, visit [monash.edu.my/student-pass](https://monash.edu.my/student-pass)

Once your student pass is approved, apply for a single entry visa (if required). Please refer to the Education Malaysia Global Services's website for more information on SEV required countries:

Visit [visa.educationmalaysia.gov.my/guidelines/sev-required-countries.html](https://visa.educationmalaysia.gov.my/guidelines/sev-required-countries.html)

Visit [monash.edu.my/student-pass](https://monash.edu.my/student-pass)



5

**PLAN YOUR ARRIVAL**

Arrange for accommodation if needed, and for international students, book your plane ticket to Kuala Lumpur and sign up for your airport reception.

 [monash.edu.my/lets-begin](https://monash.edu.my/lets-begin)

6

**PARTICIPATE IN ORIENTATION**

Orientation is designed to help you adjust to life at Monash University Malaysia. You should arrive at the University in time for this program, which starts one week before the new semester commences.

 [monash.edu.my/orientation](https://monash.edu.my/orientation)

# FEES

To study at Monash University Malaysia, you'll need to pay tuition fees to the University. Tuition fees vary depending on the course and the year of commencement. All tuition fees and course durations specified in this guide are in Malaysian Ringgit and only apply to courses studied at the Malaysian campus. The tuition fees quoted are for 48 credit points and are applicable to courses commencing in 2025. Tuition fees for courses commencing in 2026 will be different. Monash University Malaysia reserves the right to adjust the annual tuition fees in future years of your course. Any adjustment will be applied on the first day of January each year.

**GENERAL FEES**

You'll also be required to pay a fee for:

Application (once only)	AUD35 (My.App portal)
	RM100 (other payment methods)
Registration (once only)	RM200
General amenities (per semester)	RM100

**NEED HELP WITH YOUR APPLICATION?**

Contact us:



[mum.enquiry@monash.edu](mailto:mum.enquiry@monash.edu)



+60 3 5514 6000




Live Chat (Weekdays from MYT 9am to 5pm)  
[ask.monash.edu.my](https://ask.monash.edu.my)



Make an appointment (Weekdays from MYT 9am to 5pm)  
[appointment.monash.edu.my](https://appointment.monash.edu.my)

If you're an international student applying through a Monash agent, please ensure that your agent is an authorised agent by visiting

 [monash.edu.my/agents](https://monash.edu.my/agents)

## CONTACT US

### Business hours

Monday to Friday 8.30am – 6.00pm

### Counselling hours for course enquiries

Monday to Friday 9.00am – 5.00pm

**Closed on weekends and public holidays.**

### Enquiries

T +60 3 5514 6000

F +60 3 5514 6001

E [mum.enquiry@monash.edu](mailto:mum.enquiry@monash.edu)

### Address

Monash University Malaysia  
Jalan Lagoon Selatan  
47500 Bandar Sunway  
Selangor Darul Ehsan  
Malaysia

**[monash.edu.my](https://monash.edu.my)**



MonashMalaysia

The information in this brochure was correct at the time of publication (November 2024). Monash University Malaysia reserves the right to alter this information should the need arise.

Produced by Marketing and Future Students,  
Monash University Malaysia  
DULN002(B)

Registration No. 199801002475 (458601-U)  
(Date of establishment: 20 March 2000)

**READY TO APPLY?**

[monash.edu.my/apply-online](https://monash.edu.my/apply-online)